

# Recombinant Mouse SCPEP1/RISC Protein

Catalog No.: RP02117 **Recombinant**

## Sequence Information

Species	Gene ID	Swiss Prot
Mouse	74617	Q920A5

### Tags

C-His

### Synonyms

Risc; AI957256; 2410018F01Rik;  
4833411K15Rik

## Product Information

Source	Purification
HEK293 Cells	> 95% by SDS-PAGE.

Calculated MW	Observed MW
49.3 kDa	50-60 kDa

### Endotoxin

<1EU/μg

### Formulation

Lyophilized from a 0.22 μm filtered solution of PBS, pH 7.4.

### Reconstitution

Centrifuge the vial before opening. Reconstitute to a concentration of 0.1-0.5 mg/mL in sterile distilled water. Avoid vortex or vigorously pipetting the protein. For long term storage, it is recommended to add a carrier protein or stabilizer (e.g. 0.1% BSA, 5% HSA, 10% FBS or 5% Trehalose), and aliquot the reconstituted protein solution to minimize free-thaw cycles.

## Contact

 | 400-999-6126

 | [cn.market@abclonal.com.cn](mailto:cn.market@abclonal.com.cn)

 | [www.abclonal.com.cn](http://www.abclonal.com.cn)

## Background

### Basic Information

#### Description

Recombinant Mouse SCPEP1/RISC Protein is produced by HEK293 Cells expression system. The target protein is expressed with sequence (Met1-Glu452) of Mouse SCPEP1/RISC (Accession #NP\_083299.3) fused with 6×His tag at the C-terminus.

#### Bio-Activity

#### Storage

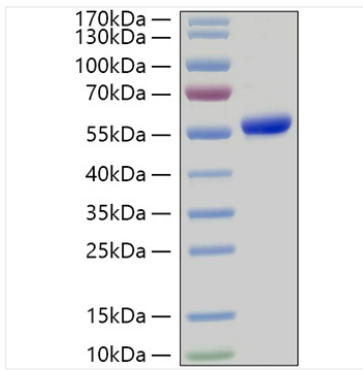
Store at -20°C. Store the lyophilized protein at -20°C to -80 °C up to 1 year from the date of receipt.

After reconstitution, the protein solution is stable at -20°C for 3 months, at 2-8°C for up to 1 week.

Avoid repeated freeze/thaw cycles.

## Validation Data

---



Recombinant Mouse Risc/Scpep1 Protein was determined by SDS-PAGE with Coomassie Blue, showing a band at 50kDa.