

Recombinant Human CADM3/IGSF4B Protein

Catalog No.: RP02145 **Recombinant**

Sequence Information

Species	Gene ID	Swiss Prot
Human	57863	Q8N126

Tags

C-His

Synonyms

CADM3;BigR;IGSF4B;NECL1;Necl-1;TSL1
;synCAM3

Product Information

Source	Purification
HEK293 cells	> 95% by SDS-PAGE.

Endotoxin

< 1 EU/μg of the protein by LAL method.

Formulation

Lyophilized from a 0.2 μm filtered solution of 20mM PB, 150mM NaCl, pH 7.2. Contact us for customized product form or formulation.

Reconstitution

Centrifuge the tube before opening. Reconstitute to a concentration of 0.1-0.5 mg/mL in sterile distilled water. Avoid vortex or vigorously pipetting the protein. For long term storage, it is recommended to add a carrier protein or stabilizer (e.g. 0.1% BSA, 5% HSA, 10% FBS or 5% Trehalose), and aliquot the reconstituted protein solution to minimize free-thaw cycles.

Contact

☎ | 400-999-6126

✉ | cn.market@abclonal.com.cn

🌐 | www.abclonal.com.cn

Background

Cell Adhesion Molecular Proteins are proteins located on the cell surface involved with the binding with other cells or with the extracellular matrix in the cell adhesion process. These proteins consists of three domains, an transmembrane domain, an intracellular domain that interacts with the cytoskeleton, and an extracellular domain that interacts with other CAMs of the same kind or with other CAMs or the extracellular matrix. Cell Adhesion Molecular 3 (CADM3) is a neural tissue-specific member of the nectin- like family of immunoglobulin superfamily. CADM3 interacts with EPB41L1 may regulate structure or function of cell-cell junctions. CADM3 has both calcium-independent homophilic cell-cell adhesion activity and calcium-independent heterophilic cell-cell adhesion activity with IGSF4, PVRL1 and PVRL3.

Basic Information

Description

Recombinant Human CADM3/IGSF4B Protein is produced by Mammalian expression system. The target protein is expressed with sequence (Asn25-His330) of human CADM3 (Accession #Q8N126) fused with a 6xHis tag at the C- terminus.

Bio-Activity

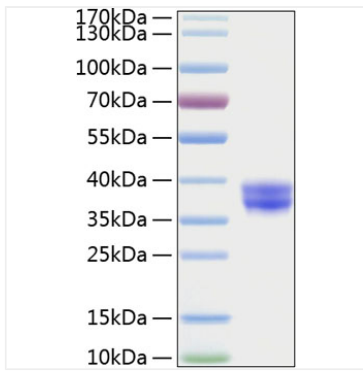
Storage

Store the lyophilized protein at -20°C to -80 °C for long term.

After reconstitution, the protein solution is stable at -20 °C for 3 months, at 2-8 °C for up to 1 week.

Avoid repeated freeze/thaw cycles.

Validation Data



Recombinant Human CADM3/IGSF4B Protein was determined by SDS-PAGE with Coomassie Blue, showing a band at 40kDa.