

Recombinant Human TFPI-2 Protein

Catalog No.: RP02148 **Recombinant**

Sequence Information

Species	Gene ID	Swiss Prot
Human	7980	P48307

Tags

C-His

Synonyms

TFPI2;PP5;REF1;TFPI-2

Product Information

Source	Purification
HEK293 cells	> 95% by SDS-PAGE.

Endotoxin

< 1 EU/μg of the protein by LAL method.

Formulation

Lyophilized from a 0.2 μm filtered solution of 20mM PB, 150mM NaCl, pH 7.2. Contact us for customized product form or formulation.

Reconstitution

Centrifuge the tube before opening. Reconstitute to a concentration of 0.1-0.5 mg/mL in sterile distilled water. Avoid vortex or vigorously pipetting the protein. For long term storage, it is recommended to add a carrier protein or stabilizer (e.g. 0.1% BSA, 5% HSA, 10% FBS or 5% Trehalose), and aliquot the reconstituted protein solution to minimize free-thaw cycles.

Contact

☎ | 400-999-6126

✉ | cn.market@abclonal.com.cn

🌐 | www.abclonal.com.cn

Background

Human Tissue Factor Pathway Inhibitor 2 (TFPI2) has a N-terminal acidic region, three Kunita domains separated with by two linker regions, and a C-terminal basic region. TFPI2 has the function of regulating plasmin-mediated matrix remodeling, inhibits trypsin, plasmin, factor VIIa/tissue factor and weakly factor Xa.. TFPI2 has no effect on thrombin. TFPI2 may contribute to tumor progression in many cancers; in these cancers, the expression of TFPI2 can be down-regulated.

Basic Information

Description

Recombinant Human TFPI-2 Protein is produced by Mammalian expression system. The target protein is expressed with sequence (Asp23-Lys213) of human TFPI-2 (Accession #P48307) fused with a 6xHis tag at the C- terminus.

Bio-Activity

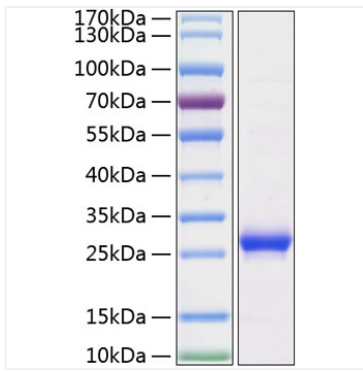
Storage

Store the lyophilized protein at -20°C to -80 °C for long term.

After reconstitution, the protein solution is stable at -20 °C for 3 months, at 2-8 °C for up to 1 week.

Avoid repeated freeze/thaw cycles.

Validation Data



Recombinant Human TFPI-2 Protein was determined by SDS-PAGE with Coomassie Blue, showing bands at 18-33kDa.