

# Recombinant Human Cyclophilin B/PPIase B/PPIB Protein

Catalog No.: RP02149 **Recombinant**

## Sequence Information

Species	Gene ID	Swiss Prot
Human	5479	P23284

### Tags

C-His

### Synonyms

CYP-S1; CYPB; HEL-S-39; OI9;  
SCYLP;PPIB; CYP-S1; peptidylprolyl  
isomerase B;CYPB;HEL-S-39;OI9;SCYLP

## Product Information

Source	Purification
HEK293 cells	> 95% by SDS-PAGE.

Calculated MW	Observed MW
20.9 kDa	21 kDa

### Endotoxin

< 1 EU/μg of the protein by LAL method.

### Formulation

Lyophilized from a 0.2 μm filtered solution of PBS,pH7.4.Contact us for customized product form or formulation.

### Reconstitution

Centrifuge the tube before opening. Reconstitute to a concentration of 0.1-0.5 mg/mL in sterile distilled water. Avoid vortex or vigorously pipetting the protein. For long term storage, it is recommended to add a carrier protein or stabilizer (e.g. 0.1% BSA, 5% HSA, 10% FBS or 5% Trehalose), and aliquot the reconstituted protein solution to minimize free-thaw cycles.

## Contact

☎ | 400-999-6126

✉ | [cn.market@abclonal.com.cn](mailto:cn.market@abclonal.com.cn)

🌐 | [www.abclonal.com.cn](http://www.abclonal.com.cn)

## Background

Cyclophilin B (SCYLP, CyPB and peptidyl-prolyl cis-trans isomerase B) is a 24 kDa glycoprotein member of the B subfamily of the cyclophilin-type PPIase family of molecules. It is both secreted and retained in the ER. When secreted, Cyclophilin B mediates chemotaxis and T cell adhesion to fibronectin. This is likely due to its prolyl cis/trans isomerase activity. Intracellularly, Cyclophilin B appears to serve as a molecular chaperone for molecules destined for secretion. It does so via stabilization, and facilitating the activity of additional chaperones.

## Basic Information

### Description

Recombinant Human Cyclophilin B/PPIase B/PPIB Protein is produced by Mammalian expression system. The target protein is expressed with sequence (Asp34-Ala212) of human PPIB (Accession #P23284) fused with a 6xHis tag at the C- terminus.

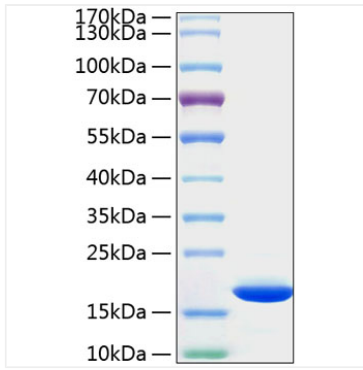
### Bio-Activity

### Storage

Store at -20°C.Store the lyophilized protein at -20°C to -80 °C up to 1 year from the date of receipt. After reconstitution, the protein solution is stable at -20°C for 3 months, at 2-8°C for up to 1 week. Avoid repeated freeze/thaw cycles.

## Validation Data

---



Recombinant Human Cyclophilin B/PPIase B/PPIB Protein was determined by SDS-PAGE with Coomassie Blue, showing a band at 21kDa.