

# Recombinant Human DLL1 Protein

Catalog No.: RP02151 **Recombinant**

## Sequence Information

Species	Gene ID	Swiss Prot
Human	28514	O00548

### Tags

C-His

### Synonyms

DLL1;DELTA1;DL1;Delta

## Product Information

Source	Purification
HEK293 cells	> 95% by SDS-PAGE.

### Endotoxin

< 1 EU/ $\mu$ g of the protein by LAL method.

### Formulation

Lyophilized from a 0.2  $\mu$ m filtered solution of 20mM Hepes, 150mM NaCl, 1mM EDTA, pH 7.4. Contact us for customized product form or formulation.

### Reconstitution

Centrifuge the tube before opening. Reconstitute to a concentration of 0.1-0.5 mg/mL in sterile distilled water. Avoid vortex or vigorously pipetting the protein. For long term storage, it is recommended to add a carrier protein or stabilizer (e.g. 0.1% BSA, 5% HSA, 10% FBS or 5% Trehalose), and aliquot the reconstituted protein solution to minimize free-thaw cycles.

## Contact

 | 400-999-6126 | [cn.market@abclonal.com.cn](mailto:cn.market@abclonal.com.cn) | [www.abclonal.com.cn](http://www.abclonal.com.cn)

## Background

Delta-like protein 1 (DLL1) is a type I transmembrane protein that belongs to the Delta/Serrate/Lag2 (DSL) family of Notch ligands. Mature human DLL1 consists of a 528 amino acid (aa) extracellular domain (ECD) with one DSL domain and eight EGF-like repeats, a 23 aa transmembrane segment, and a 155 aa cytoplasmic domain. Within the ECD, human DLL1 shares 91% aa sequence identity with mouse and rat DLL1. The residual membranebound portion of DLL1 can be cleaved by presenilin-dependent  $\gamma$ -secretase, enabling the cytoplasmic domain to migrate to the nucleus. DLL1 localizes to adherens junctions on neuronal processes through its association with the scaffolding protein MAGI1. DLL1 is widely expressed, and it plays an important role in embryonic somite formation, cochlear hair cell differentiation, plus B and T lymphocyte differentiation. The upregulation of DLL1 in arterial endothelial cells following injury or angiogenic stimulation is central to postnatal arteriogenesis. DLL1 is also overexpressed in cervical carcinoma and glioma and contributes to tumor progression.

## Basic Information

### Description

Recombinant Human DLL1 Protein is produced by Mammalian expression system. The target protein is expressed with sequence (Gln18-Gly540) of human DLL1 (Accession #O00548) fused with a 6xHis tag at the C-terminus.

### Bio-Activity

### Storage

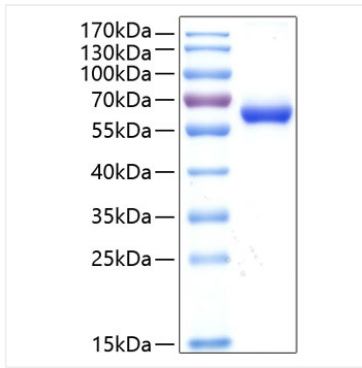
Store the lyophilized protein at -20°C to -80 °C for long term.

After reconstitution, the protein solution is stable at -20 °C for 3 months, at 2-8 °C for up to 1 week.

Avoid repeated freeze/thaw cycles.

## Validation Data

---



Recombinant Human DLL1 Protein was determined by SDS-PAGE with Coomassie Blue, showing a band at 65kDa.