

# Recombinant Human SLAMF3/LY9/CD229 Protein

Catalog No.: RP02165 **Recombinant**

## Sequence Information

Species	Gene ID	Swiss Prot
Human	4063	Q9HBG7

### Tags

C-His

### Synonyms

LY9;CD229;SLAMF3;hly9;mLY9

## Product Information

Source	Purification
HEK293 cells	> 95% by SDS-PAGE.

**Calculated MW**   **Observed MW**

### Endotoxin

< 1 EU/μg of the protein by LAL method.

### Formulation

Lyophilized from a 0.2 μm filtered solution of PBS, pH 7.4. Contact us for customized product form or formulation.

### Reconstitution

Centrifuge the tube before opening. Reconstitute to a concentration of 0.1-0.5 mg/mL in sterile distilled water. Avoid vortex or vigorously pipetting the protein. For long term storage, it is recommended to add a carrier protein or stabilizer (e.g. 0.1% BSA, 5% HSA, 10% FBS or 5% Trehalose), and aliquot the reconstituted protein solution to minimize free-thaw cycles.

## Contact

☎ | 400-999-6126

✉ | [cn.market@abclonal.com.cn](mailto:cn.market@abclonal.com.cn)

🌐 | [www.abclonal.com.cn](http://www.abclonal.com.cn)

## Background

SLAMF3 (CD229) is a type I transmembrane glycoprotein in the SLAM subgroup of the CD2 family. Mature human SLAMF3 consists of a 407 amino acid (aa) extracellular domain (ECD) with two Ig-like V-set and two Ig-like truncated C2-set domains. The ECD of human SLAMF3 shares 57% - 59% aa sequence identity with mouse and rat SLAMF3. Within the first two Ig-like domains that are common to all SLAM proteins, human SLAMF3 shares 24% - 39% aa sequence identity with human 2B4, BLAME, CD2F-10, CD84, CRACC, NTB-A, and SLAM. It is expressed on T and B cells, thymocytes, and more weakly on NK cells. It may participate in adhesion reactions between T lymphocytes and accessory cells by homophilic interaction. Promotes T-cell differentiation into a helper T-cell Th17 phenotype leading to increased IL-17 secretion; the costimulatory activity requires SH2D1A. SLAMF3 may be involved in the maintenance of peripheral cell tolerance by serving as a negative regulator of the immune response. It also disable autoantibody responses and inhibit IFN-gamma secretion by CD4+ T-cells and negatively regulate the size of thymic innate CD8+ T-cells and the development of invariant natural killer T (iNKT) cells.

## Basic Information

### Description

Recombinant Human SLAMF3/LY9/CD229 Protein is produced by Mammalian expression system. The target protein is expressed with sequence (Lys48-Lys454) of human SLAMF3 (Accession #Q9HBG7) fused with a 6xHis tag at the C- terminus.

### Bio-Activity

#### Storage

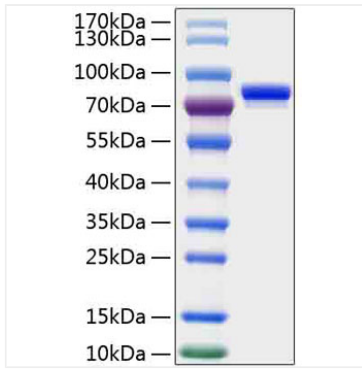
Store the lyophilized protein at -20°C to -80 °C for long term.

After reconstitution, the protein solution is stable at -20 °C for 3 months, at 2-8 °C for up to 1 week.

Avoid repeated freeze/thaw cycles.

## Validation Data

---



Recombinant Human SLAMF3/LY9/CD229 Protein was determined by SDS-PAGE with Coomassie Blue, showing a band at 75kDa.