

Catalog No.: RP02167 **Recombinant**

Species	Gene ID	Swiss Prot
Human	1510	P14091

C-His

CTSE:CATE

Source	Purification
HEK293 cells	≥ 95 % as determined by SDS-PAGE

Calculated MW	Observed MW
41.78 kDa	46 kDa

< 1 EU/μg of the protein by LAL method.

Lyophilized from a 0.2 μ m filtered solution of 20mM MES, 150mM NaCl, pH 5.5. Contact us for customized product form or formulation.

Centrifuge the tube before opening. Reconstitute to a concentration of 0.1-0.5 mg/mL in sterile distilled water. Avoid vortex or vigorously pipetting the protein. For long term storage, it is recommended to add a carrier protein or stabilizer (e.g. 0.1% BSA, 5% HSA, 10% FBS or 5% Trehalose), and aliquot the reconstituted protein solution to minimize free-thaw cycles.

 | 400-999-6126

 | cn.market@abclonal.com.cn

 | www.abclonal.com.cn

Cathepsin E (CTSE) is a gastric aspartyl protease that functions as a disulfide-linked homodimer. It is a member of the Peptidase C1 family, and has a specificity similar to that of Pepsin A and Cathepsin D. CTSE is localized to the endoplasmic reticulum and Golgi apparatus, while the mature enzyme is localized to the endosome. It is expressed abundantly in the stomach, the Clara cells of the lung and activated B-lymphocytes, and at lower levels in lymph nodes, skin and spleen. CTSE is an intracellular proteinase that have a role in immune function, activation-induced lymphocyte depletion in the thymus, neuronal degeneration and glial cell activation in the brain. Furthermore, it probably involved in the processing of antigenic peptides during MHC class II-mediated antigen presentation.

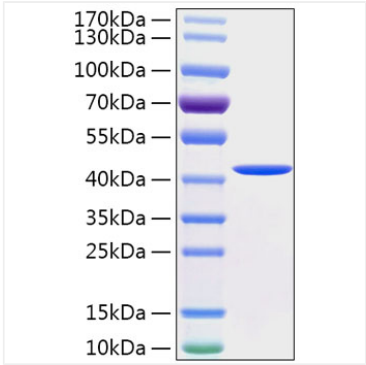
Recombinant Human Cathepsin E Protein is produced by Mammalian expression system. The target protein is expressed with sequence (Ser20-Pro396) of human CTSE (Accession #P14091) fused with a 6xHis tag at the C-terminus.

The product is shipped at ambient temperature. Upon receipt, store it immediately at the temperature recommended below.

Avoid repeated freeze/thaw cycles.

For your safety and health, please wear a lab coat and disposable gloves for handling.

Validation Data



Recombinant Human Cathepsin E Protein was determined by SDS-PAGE under reducing conditions with Coomassie Blue.