

# Recombinant Human PD-1/PDCD1/CD279 Protein

Catalog No.: RP02237 **Recombinant**

## Sequence Information

Species	Gene ID	Swiss Prot
Human	5133	Q15116

### Tags

C-mFc&His

### Synonyms

PDCD1; CD279; PD-1; PD1; SLEB2;  
hPD-1; hPD-I; hSLE1; programmed cell  
death  
1;PD-1;CD279;PD1;SLEB2;hPD-1;hPD-  
I;hSLE1;PD-1/CD279

## Product Information

Source	Purification
HEK293 cells	> 95% by SDS- PAGE.

### Endotoxin

### Formulation

Lyophilized from sterile PBS, pH 7.4.  
Normally 5 % - 32 % trehalose is added  
as protectants before lyophilization.

### Reconstitution

Reconstitute with deionized water

## Background

This protein is expressed in pro-B-cells and is thought to play a role in their differentiation. In mice, expression of this gene is induced in the thymus when anti-CD3 antibodies are injected and large numbers of thymocytes undergo apoptosis. Mice deficient for this gene bred on a BALB/c background developed dilated cardiomyopathy and died from congestive heart failure. These studies suggest that this gene product may also be important in T cell function and contribute to the prevention of autoimmune diseases.

## Basic Information

### Description

Recombinant Human PD-1/PDCD1/CD279 Protein is produced by HEK293 cells expression system. The target protein is expressed with sequence (PD-1(Phe24-Val170)&mFc(Pro99-Lys330)) of human PDCD1 (Accession #) fused with a Fc and His Tag at the C-terminal. .

### Bio-Activity

ELISA plate pre-coated by 2 µg/mL (100 µL/well) Human PD1, mFc-His tagged protein can bind Anti-PD-1 Neutralizing antibody in a linear range of 0.24-6.49 ng/mL.

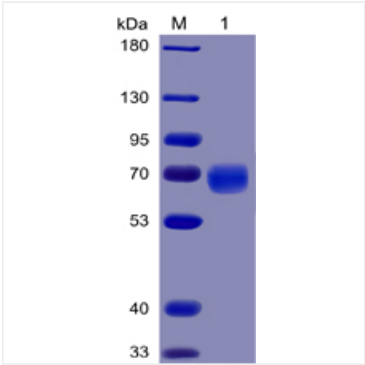
### Storage

Store the lyophilized protein at -20°C to -80°C for long term.  
After reconstitution, the protein solution is stable at -20°C for 3 months, at 2-8°C for up to 1 week.  
Avoid repeated freeze/thaw cycles.

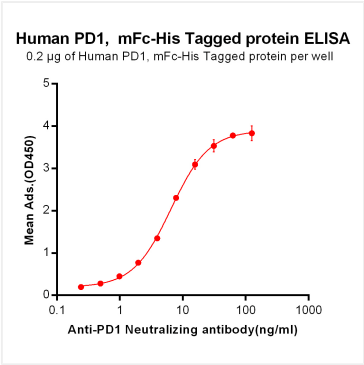
## Contact

☎		400-999-6126
✉		cn.market@abclonal.com.cn
🌐		www.abclonal.com.cn

Validation Data



Recombinant Human PD-1/PDCD1/CD279 Protein was determined by SDS-PAGE with Coomassie Blue, showing bands at 43.5 kDa



ELISA plate pre-coated by 2 µg/ml (100 µl/well) Human PD1, mFc-His tagged protein can bind Anti-PD-1 Neutralizing antibody in a linear range of 0.24-6.49 ng/ml.