

Recombinant Human SELPLG/CD162 Protein

Catalog No.: RP02241 **Recombinant**

Sequence Information

Species	Gene ID	Swiss Prot
Human	6404	Q14242

Tags

C-His

Synonyms

SELPLG;CD162;CLA;PSGL-1;PSGL1

Product Information

Source	Purification
HEK293 cells	> 95% by SDS-PAGE.

Endotoxin

Formulation

Lyophilized from a 0.22 µm filtered solution of PBS, pH 7.4. Contact us for customized product form or formulation.

Reconstitution

Centrifuge the vial before opening. Reconstitute to a concentration of 0.1-0.5 mg/mL in sterile distilled water. Avoid vortex or vigorously pipetting the protein. For long term storage, it is recommended to add a carrier protein or stabilizer (e.g. 0.1% BSA, 5% HSA, 10% FBS or 5% Trehalose), and aliquot the reconstituted protein solution to minimize freeze-thaw cycles.

Contact

 | 400-999-6126 | cn.market@abclonal.com.cn | www.abclonal.com.cn

Background

This gene encodes a glycoprotein that functions as a high affinity counter-receptor for the cell adhesion molecules P-, E- and L- selectin expressed on myeloid cells and stimulated T lymphocytes. As such, this protein plays a critical role in leukocyte trafficking during inflammation by tethering of leukocytes to activated platelets or endothelia expressing selectins. This protein requires two post-translational modifications, tyrosine sulfation and the addition of the sialyl Lewis x tetrasaccharide (sLex) to its O-linked glycans, for its high-affinity binding activity. Aberrant expression of this gene and polymorphisms in this gene are associated with defects in the innate and adaptive immune response. Alternate splicing results in multiple transcript variants.

Basic Information

Description

Recombinant Human SELPL/CD162 Protein is produced by HEK293 cells expression system. The target protein is expressed with sequence (CD162(Leu18-Cys320)) of human SELPLG (Accession #) fused with a His tag at the C-terminus.

Bio-Activity

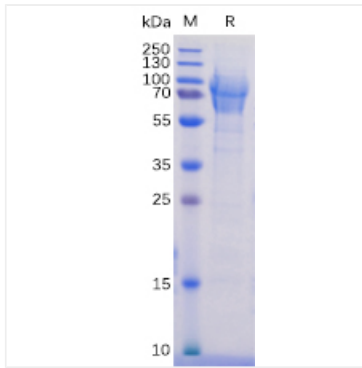
Storage

Store the lyophilized protein at -20°C to -80 °C for long term.

After reconstitution, the protein solution is stable at -20 °C for 3 months, at 2-8 °C for up to 1 week.

Avoid repeated freeze/thaw cycles.

Validation Data



Recombinant Human SELPLG/P-selectin glycoprotein ligand 1/CD162 Protein was determined by SDS-PAGE with Coomassie Blue, showing bands at 70-100 kDa