

Recombinant Human Prostate stem cell antigen/PSCA Protein

Catalog No.: RP02245 **Recombinant**

Sequence Information

Species	Gene ID	Swiss Prot
Human	8000	O43653

Tags

C-His

Synonyms

PSCA;PRO232

Background

This gene encodes a glycosylphosphatidylinositol-anchored cell membrane glycoprotein. In addition to being highly expressed in the prostate it is also expressed in the bladder, placenta, colon, kidney, and stomach. This gene is up-regulated in a large proportion of prostate cancers and is also detected in cancers of the bladder and pancreas. This gene includes a polymorphism that results in an upstream start codon in some individuals; this polymorphism is thought to be associated with a risk for certain gastric and bladder cancers. Alternative splicing results in multiple transcript variants.

Basic Information

Description

Recombinant Human Prostate stem cell antigen/PSCA Protein is produced by HEK293 cells expression system. The target protein is expressed with Prostate stem cell antigen/PSCA(Leu12-Ser86) fused with a His Tag at the C-terminal. .

Bio-Activity

Storage

Store at -20°C. Store the lyophilized protein at -20°C to -80 °C up to 1 year from the date of receipt.

After reconstitution, the protein solution is stable at -20°C for 3 months, at 2-8°C for up to 1 week.

Avoid repeated freeze/thaw cycles.

Product Information

Source	Purification
HEK293 cells	> 95% by SDS-PAGE.

Calculated MW	Observed MW
9.06 kDa	15-35 kDa

Endotoxin

< 0.01 EU/μg of the protein by LAL method.

Formulation

Lyophilized from sterile PBS, pH 7.4. Normally 5 % - 66 % trehalose is added as protectants before lyophilization.

Reconstitution

Reconstitute with deionized water

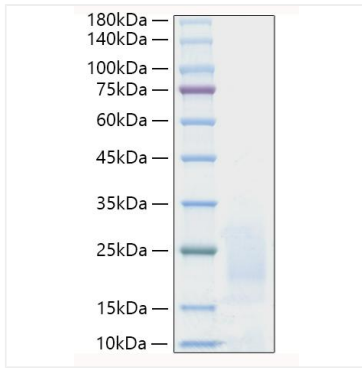
Contact

☎ | 400-999-6126

✉ | cn.market@abclonal.com.cn

🌐 | www.abclonal.com.cn

Validation Data



Recombinant Human Prostate stem cell antigen/PSCA Protein was determined by SDS-PAGE with Coomassie Blue, showing bands at 15-35 kDa.