

# Recombinant Human Claudin-6 Protein

Catalog No.: RP02249 **Recombinant**

## Sequence Information

Species	Gene ID	Swiss Prot
Human	9074	P56747

### Tags

C-mFc

### Synonyms

CLDN6

## Product Information

Source	Purification
HEK293 cells	> 95% by SDS-PAGE.

### Endotoxin

### Formulation

Lyophilized from sterile PBS, pH 7.4. Normally 5 % - 52 % trehalose is added as protectants before lyophilization.

### Reconstitution

Centrifuge the vial before opening. Reconstitute to a concentration of 0.1-0.5 mg/mL in sterile distilled water. Avoid vortex or vigorously pipetting the protein. For long term storage, it is recommended to add a carrier protein or stabilizer (e.g. 0.1% BSA, 5% HSA, 10% FBS or 5% Trehalose), and aliquot the reconstituted protein solution to minimize freeze-thaw cycles.

## Contact

 | 400-999-6126

 | [cn.market@abclonal.com.cn](mailto:cn.market@abclonal.com.cn)

 | [www.abclonal.com.cn](http://www.abclonal.com.cn)

## Background

Tight junctions represent one mode of cell-to-cell adhesion in epithelial or endothelial cell sheets, forming continuous seals around cells and serving as a physical barrier to prevent solutes and water from passing freely through the paracellular space. These junctions are comprised of sets of continuous networking strands in the outwardly facing cytoplasmic leaflet, with complementary grooves in the inwardly facing extracytoplasmic leaflet. This gene encodes a component of tight junction strands, which is a member of the claudin family. The protein is an integral membrane protein and is one of the entry cofactors for hepatitis C virus. The gene methylation may be involved in esophageal tumorigenesis. This gene is adjacent to another family member CLDN9 on chromosome 16.

## Basic Information

### Description

Recombinant Human Claudin-6 Protein is produced by HEK293 cells expression system. The target protein is expressed with sequence (CLDN6(Met1-Ala4)&(Gln57-Gln78)&(Arg145-Arg158)&mFc(Pro99-Lys330)) of human CLDN6 (Accession #) fused with a Fc Tag at the C-terminal. .

### Bio-Activity

### Storage

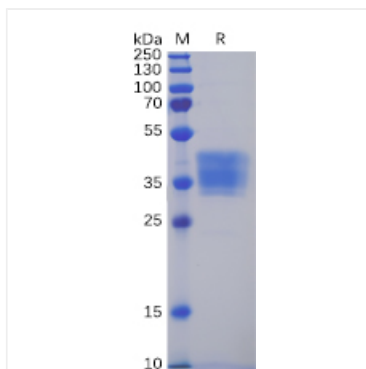
Store the lyophilized protein at -20°C to -80°C for long term.

After reconstitution, the protein solution is stable at -20°C for 3 months, at 2-8°C for up to 1 week.

Avoid repeated freeze/thaw cycles.

## Validation Data

---



Recombinant Human Claudin-6 Protein was determined by SDS-PAGE with Coomassie Blue, showing bands at 31.6 kDa