

# Recombinant SARS-COV-2 Spike S1(D614G) Protein

Catalog No.: RP02329 **Recombinant**

## Sequence Information

Species	Gene ID	Swiss Prot
SARS-COV-2	43740568	QHD43416.1

### Tags

C-His&Avi

### Synonyms

S1 protein;Spike glycoprotein Subunit1;S glycoprotein Subunit1;Spike protein S1

## Product Information

Source	Purification
HEK293 cells	> 95% by Tris-Bis PAGE;> 95% by SEC-HPLC

**Calculated MW** **Observed MW**

### Endotoxin

< 1 EU/μg of the protein by LAL method.

### Formulation

Lyophilized from a 0.22 μm filtered solution of PBS, pH 7.4.

### Reconstitution

Centrifuge the tube before opening. Reconstitute to a concentration of 0.1-0.5 mg/mL in sterile distilled water. Avoid vortex or vigorously pipetting the protein. For long term storage, it is recommended to add a carrier protein or stabilizer (e.g. 0.1% BSA, 5% HSA, 10% FBS or 5% Trehalose), and aliquot the reconstituted protein solution to minimize free-thaw cycles.

## Contact

 | 400-999-6126

 | [cn.market@abclonal.com.cn](mailto:cn.market@abclonal.com.cn)

 | [www.abclonal.com.cn](http://www.abclonal.com.cn)

## Background

### Basic Information

#### Description

Recombinant SARS-COV-2 SARS-COV-2 Spike S1 Protein is produced by Expi293 expression system. The target protein is expressed with sequence (Gln14-Arg683(D614G)) of SARS-COV-2 SARS-COV-2 Spike S1 fused with His tag and Avi at the C-terminal.

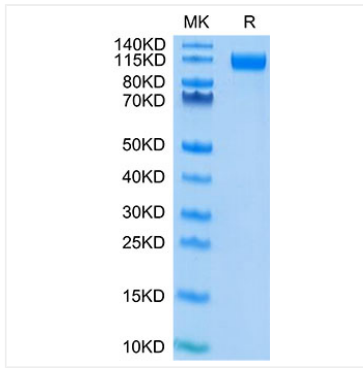
#### Bio-Activity

Immobilized SARS-CoV-2 S1(D614G),His Tag at 2 μg/mL (100 μL/Well) on plate.Dose response curve for Human ACE2,hFc Tag with the EC<sub>50</sub> of 42 ng/mL determined by ELISA.

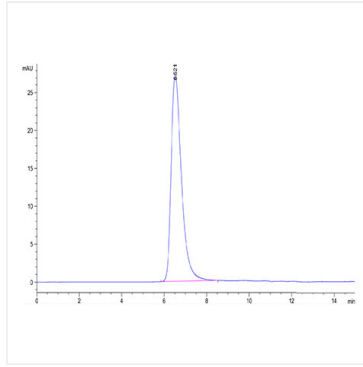
#### Storage

Store at -20°C.Store the lyophilized protein at -20°C to -80 °C up to 1 year from the date of receipt. After reconstitution, the protein solution is stable at -20°C for 3 months, at 2-8°C for up to 1 week. Avoid repeated freeze/thaw cycles.

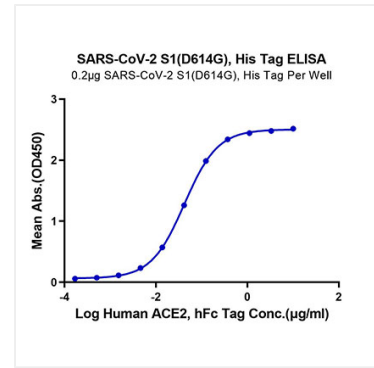
## Validation Data



SARS-COV-2 Spike S1 (D614G) on Tris-Bis PAGE under reduced condition. The purity is greater than 95%.



The purity of SARS-COV-2 Spike S1 (D614G) is greater than 95% as determined by SEC-HPLC.



Immobilized SARS-CoV-2 S1 (D614G) , His Tag at 2µg/ml (100µl/Well) on plate.Dose response curve for Human ACE2, hFc Tag with the EC<sub>50</sub> of 42ng/ml determined by ELISA.