

Biotinylated Recombinant Human CTLA-4/CD152 Protein

Catalog No.: RP02340 **Recombinant**

Sequence Information

Species	Gene ID	Swiss Prot
Human	1493	P16410

Tags

C-His&Avi

Synonyms

CTLA4;ALPS5;CD;CD152;CELIAC3;CTLA-4;GRD4;GSE;IDDM12

Product Information

Source

HEK293 cells

Purification

> 95% by Tris-Bis PAGE;> 95% by SEC-HPLC

Endotoxin

< 1 EU/μg of the protein by LAL method.

Formulation

Lyophilized from a 0.22 μm filtered solution of PBS, pH 7.4.

Reconstitution

Centrifuge the tube before opening. Reconstitute to a concentration of 0.1-0.5 mg/mL in sterile distilled water. Avoid vortex or vigorously pipetting the protein. For long term storage, it is recommended to add a carrier protein or stabilizer (e.g. 0.1% BSA, 5% HSA, 10% FBS or 5% Trehalose), and aliquot the reconstituted protein solution to minimize freeze-thaw cycles.

Contact

 | 400-999-6126

 | cn.market@abclonal.com.cn

 | www.abclonal.com.cn

Background

Basic Information

Description

Biotinylated Recombinant Human CTLA4 Protein is produced by Expi293 expression system. The target protein is expressed with sequence (Ala37-Asp161) of Human CTLA4 fused with His tag and Avi tag at the C-terminal.

Bio-Activity

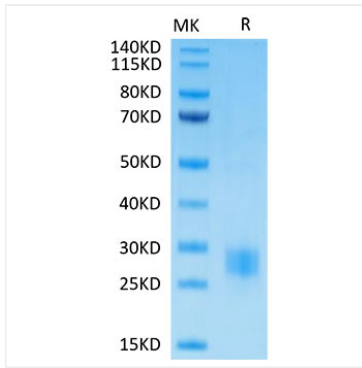
Storage

Store the lyophilized protein at -20°C to -80°C for long term.

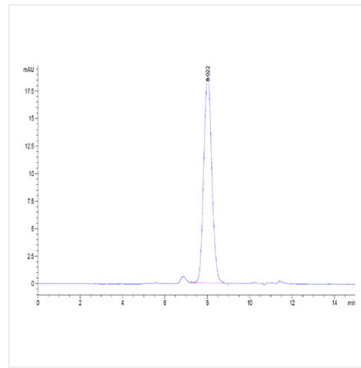
After reconstitution, the protein solution is stable at -20°C for 3 months, at 2-8°C for up to 1 week.

Avoid repeated freeze/thaw cycles.

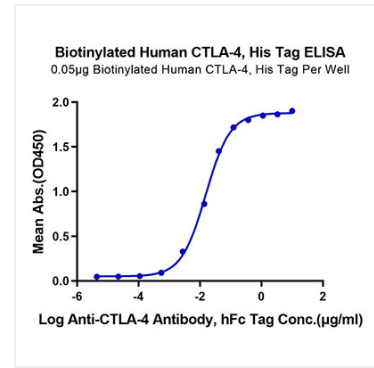
Validation Data



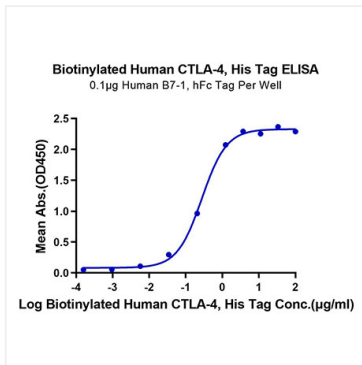
Biotinylated Human CTLA-4 on Tris-Bis PAGE under reduced condition. The purity is greater than 95%.



The purity of Biotinylated Human CTLA-4 is greater than 95% as determined by SEC-HPLC.



Immobilized Biotinylated Human CTLA-4, His Tag at 0.5µg/ml (100µl/Well) on the plate. Dose response curve for Anti-CTLA-4 Antibody, hFc Tag with the EC₅₀ of 15.4ng/ml determined by ELISA.



Immobilized Human B7-1, hFc Tag at 1µg/ml (100µl/Well) on the plate. Dose response curve for Biotinylated Human CTLA-4, His Tag with the EC₅₀ of 0.28µg/ml determined by ELISA.