

# Biotinylated Recombinant Human Glypican-3/GPC3 Protein

Catalog No.: RP02371 **Recombinant**

## Sequence Information

Species	Gene ID	Swiss Prot
Human	2719	P51654

### Tags

C-His&Avi

### Synonyms

GPC3;DGSX; GTR2-2; MXR7; OCI-5;  
SDYS; SGB; SGBS;  
SGBS1;GTR2-2;MXR7;OCI-5;SDYS;SGB;S  
GBS;SGBS1;glypican-3

## Product Information

Source	Purification
HEK293 cells	> 95% by Tris-Bis PAGE

### Endotoxin

< 1 EU/μg of the protein by LAL method.

### Formulation

Lyophilized from a 0.22 μm filtered solution of PBS, pH 7.4.

### Reconstitution

Centrifuge the tube before opening.  
Reconstitute to a concentration of 0.1-0.5 mg/mL in sterile distilled water. Avoid vortex or vigorously pipetting the protein. For long term storage, it is recommended to add a carrier protein or stabilizer (e.g. 0.1% BSA, 5% HSA, 10% FBS or 5% Trehalose), and aliquot the reconstituted protein solution to minimize free-thaw cycles.

## Background

### Basic Information

#### Description

Biotinylated Recombinant Human GPC3 Protein is produced by Expi293 expression system. The target protein is expressed with sequence (Gln25-His559) of Human GPC3 fused with His tag and Avi tag at the C-terminal.

#### Bio-Activity

Use Biotinylated Human GPC3-His protein to detect the expression rate of Anti-GPC3-CAR positive cells. 293T cells and anti-GPC3 CAR-293T cells were incubated with Biotinylated human GPC3-His (25-559) , His Tag and Biotinylated Protein Control-His. Non-transfected 293 cells and Biotinylated Protein Control-His were used as negative control. SA-FITC was used to evaluate the binding activity of Biotinylated Human GPC3.

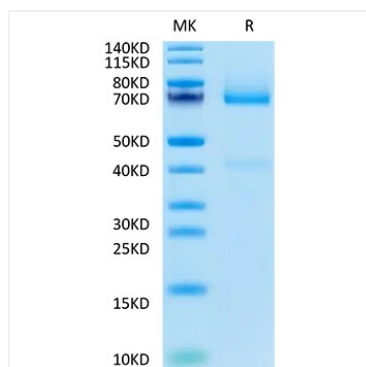
#### Storage

Store the lyophilized protein at -20°C to -80°C for long term.  
After reconstitution, the protein solution is stable at -20°C for 3 months, at 2-8°C for up to 1 week.  
Avoid repeated freeze/thaw cycles.

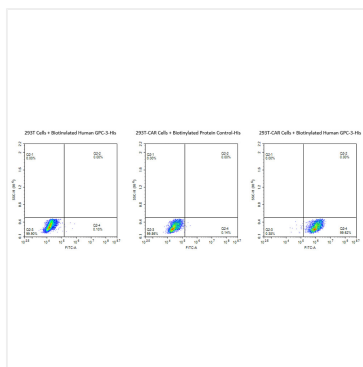
## Contact

☎		400-999-6126
✉		cn.market@abclonal.com.cn
🌐		www.abclonal.com.cn

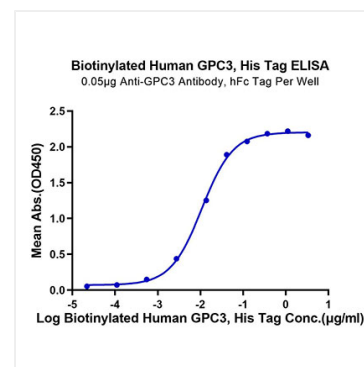
## Validation Data



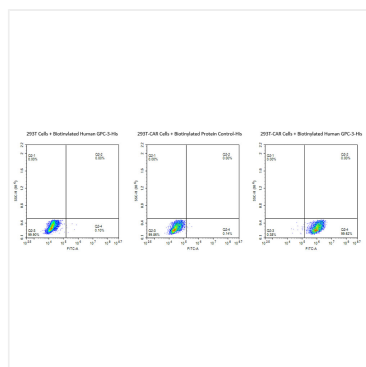
Biotinylated Human GPC3 on Tris-Bis PAGE under reduced condition. The purity is greater than 90%.



Use Biotinylated Human GPC3-His protein to detect the expression rate of Anti-GPC3-CAR positive cells. 293T cells and anti-GPC3 CAR-293T cells were incubated with Biotinylated human GPC3-His (25-559) , His Tag and Biotinylated Protein Control-His. Non-transfected 293 cells and Biotinylated Protein Control-His were used as negative control. SA-FITC was used to evaluate the binding activity of Biotinylated Human GPC3.



Immobilized Anti-GPC3 Antibody, hFc Tag at 0.5µg/ml (100µl/well) on the plate. Dose response curve for Biotinylated Human GPC3, His Tag with the EC<sub>50</sub> of 10.8ng/ml determined by ELISA.



Use Biotinylated Human GPC3-His protein to detect the expression rate of Anti-GPC3-CAR positive cells. 293T cells and anti-GPC3 CAR-293T cells were incubated with Biotinylated human GPC3-His (25-559) , His Tag and Biotinylated Protein Control-His. Non-transfected 293 cells and Biotinylated Protein Control-His were used as negative control. SA-FITC was used to evaluate the binding activity of Biotinylated Human GPC3.