

# Biotinylated Recombinant Human Glypican-3/GPC3 Protein

Catalog No.: RP02371B **Recombinant**

## Sequence Information

| Species | Gene ID | Swiss Prot |
|---------|---------|------------|
| Human   | 2719    | P51654     |

### Tags

C-His&Avi

### Synonyms

GPC3;DGSX; GTR2-2; MXR7; OCI-5;  
SDYS; SGB; SGBS;  
SGBS1;GTR2-2;MXR7;OCI-5;SDYS;SGB;S  
GBS;SGBS1;glypican-3

## Product Information

| Source       | Purification              |
|--------------|---------------------------|
| HEK293 cells | > 95% by Tris-Bis<br>PAGE |

### Endotoxin

< 1 EU/μg of the protein by LAL method.

### Formulation

Lyophilized from a 0.22 μm filtered solution of PBS, pH 7.4.

### Reconstitution

Centrifuge the tube before opening.  
Reconstitute to a concentration of 0.1-0.5 mg/mL in sterile distilled water. Avoid vortex or vigorously pipetting the protein. For long term storage, it is recommended to add a carrier protein or stabilizer (e.g. 0.1% BSA, 5% HSA, 10% FBS or 5% Trehalose), and aliquot the reconstituted protein solution to minimize free-thaw cycles.

## Contact

☎ | 400-999-6126

✉ | [cn.market@abclonal.com.cn](mailto:cn.market@abclonal.com.cn)

🌐 | [www.abclonal.com.cn](http://www.abclonal.com.cn)

## Background

Glypican-3 is a protein, which is encoded by the GPC3 gene in humans. The protein core of GPC3 consists of two subunits, where the N-terminal subunit has a size of ~40 kDa and the C-terminal subunit is ~30 kDa. Glypican 3 is a potential therapeutic target for treating liver cancer and other cancers. Several therapeutic anti-GPC3 antibodies have been developed.

## Basic Information

### Description

Biotinylated Recombinant Human Glypican-3/GPC3 Protein is produced by Expi293 expression system. The target protein is expressed with sequence (Gln25-His559) of Human GPC3 fused with a His tag and Avi tag at the C-terminal.

### Bio-Activity

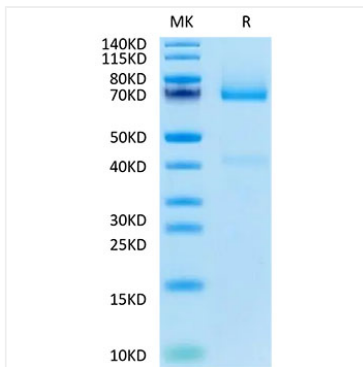
#### Storage

Store at -20°C. Store the lyophilized protein at -20°C to -80°C up to 1 year from the date of receipt.

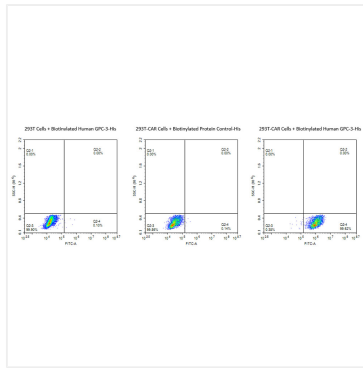
After reconstitution, the protein solution is stable at -20°C for 3 months, at 2-8°C for up to 1 week.

Avoid repeated freeze/thaw cycles.

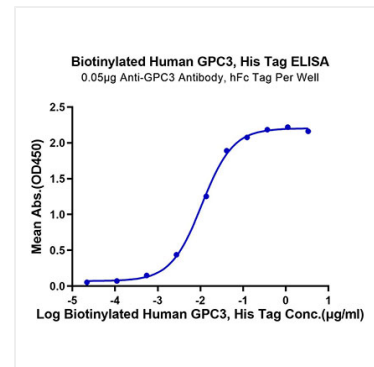
## Validation Data



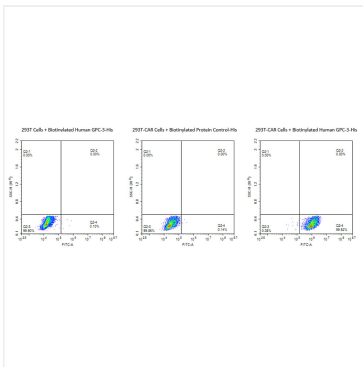
Biotinylated Human GPC3 on Tris-Bis PAGE under reduced condition. The purity is greater than 90%.



Use Biotinylated Human GPC3-His protein to detect the expression rate of Anti-GPC3-CAR positive cells. 293T cells and anti-GPC3 CAR-293T cells were incubated with Biotinylated human GPC3-His (25-559), His Tag and Biotinylated Protein Control-His. Non-transfected 293 cells and Biotinylated Protein Control-His were used as negative control. SA-FITC was used to evaluate the binding activity of Biotinylated Human GPC3.



Immobilized Anti-GPC3 Antibody, hFc Tag at 0.5µg/ml (100µl/well) on the plate. Dose response curve for Biotinylated Human GPC3, His Tag with the EC<sub>50</sub> of 10.8ng/ml determined by ELISA.



Use Biotinylated Human GPC3-His protein to detect the expression rate of Anti-GPC3-CAR positive cells. 293T cells and anti-GPC3 CAR-293T cells were incubated with Biotinylated human GPC3-His (25-559), His Tag and Biotinylated Protein Control-His. Non-transfected 293 cells and Biotinylated Protein Control-His were used as negative control. SA-FITC was used to evaluate the binding activity of Biotinylated Human GPC3.