

# Recombinant Cynomolgus Mesothelin/MSLN Protein

Catalog No.: RP02446 **Recombinant**

## Sequence Information

Species	Gene ID	Swiss Prot
Cynomolgus		A0A2K5TW94-1

### Tags

C-hFc

### Synonyms

MSLN; CAK1 antigen; CAK1; megakaryocyte potentiating factor; Mesothelin; MPF; MPFSMRP; Pre-pro-megakaryocyte-potentiating factor; SMR; soluble MPF mesothelin related protein

## Product Information

Source	Purification
HEK293 cells	> 95% by Tris-Bis PAGE; > 95% by SEC-HPLC

### Endotoxin

< 1 EU/μg of the protein by LAL method.

### Formulation

Lyophilized from a 0.22 μm filtered solution of PBS, pH 7.4.

### Reconstitution

Centrifuge the tube before opening. Reconstitute to a concentration of 0.1-0.5 mg/mL in sterile distilled water. Avoid vortex or vigorously pipetting the protein. For long term storage, it is recommended to add a carrier protein or stabilizer (e.g. 0.1% BSA, 5% HSA, 10% FBS or 5% Trehalose), and aliquot the reconstituted protein solution to minimize free-thaw cycles.

## Background

## Basic Information

### Description

Recombinant Cynomolgus MSLN Protein is produced by Expi293 expression system. The target protein is expressed with sequence (Asp296-Gly580) of Cynomolgus MSLN fused with a hFc tag at the C-terminal.

### Bio-Activity

Immobilized Human CA125 at 5 μg/mL (100 μL/Well). Dose response curve for Cyno MSLN with the EC<sub>50</sub> of 4.28 μg/mL determined by ELISA.

### Storage

Store the lyophilized protein at -20°C to -80°C for long term. After reconstitution, the protein solution is stable at -20°C for 3 months, at 2-8°C for up to 1 week. Avoid repeated freeze/thaw cycles.

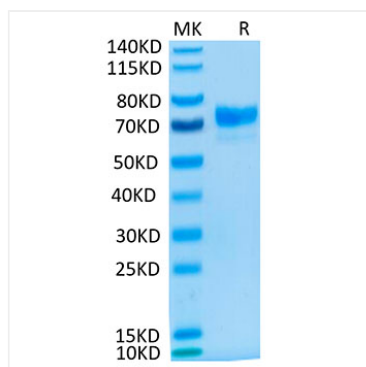
## Contact

 | 400-999-6126

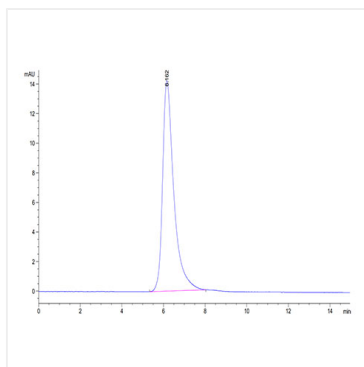
 | [cn.market@abclonal.com.cn](mailto:cn.market@abclonal.com.cn)

 | [www.abclonal.com.cn](http://www.abclonal.com.cn)

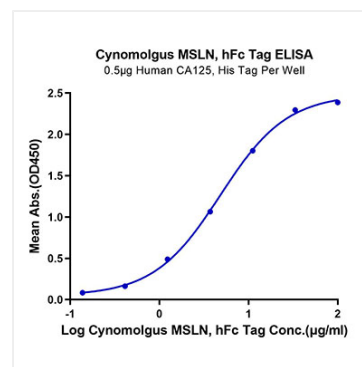
## Validation Data



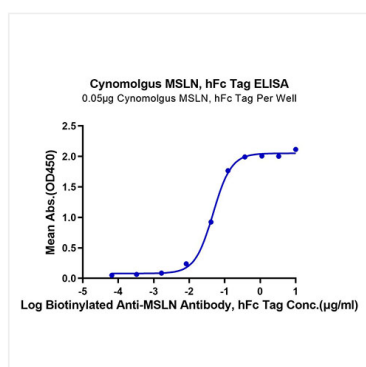
Cynomolgus MSLN on Tris-Bis PAGE under reduced condition. The purity is greater than 95%.



The purity of Cynomolgus MSLN is greater than 95% as determined by SEC-HPLC.



Immobilized Human CA125, His Tag at 5μg/mL (100μl/Well). Dose response curve for Cynomolgus MSLN, hFc Tag with the EC<sub>50</sub> of 4.8μg/ml determined by ELISA.



Immobilized Cynomolgus MSLN, hFc Tag at 0.5μg/ml (100μl/Well) on the plate. Dose response curve for Biotinylated Anti-MSLN Antibody, hFc Tag with the EC<sub>50</sub> of 47.1ng/ml determined by ELISA.