

Biotinylated Recombinant Human Mesothelin/MSLN Protein

Catalog No.: RP02449B **Recombinant**

Sequence Information

Species	Gene ID	Swiss Prot
Human	10232	Q13421-2

Tags

C-hFc&Avi

Synonyms

MPF; SMRP;MSLN;SMRP

Product Information

Source	Purification
HEK293 cells	> 95% by Tris-Bis PAGE;> 95% by SEC-HPLC

Calculated MW	Observed MW
61.1 kDa	70-80 kDa

Endotoxin

< 1 EU/μg of the protein by LAL method.

Formulation

Lyophilized from a 0.22 μm filtered solution of PBS, pH 7.4.

Reconstitution

Centrifuge the tube before opening. Reconstitute to a concentration of 0.1-0.5 mg/mL in sterile distilled water. Avoid vortex or vigorously pipetting the protein. For long term storage, it is recommended to add a carrier protein or stabilizer (e.g. 0.1% BSA, 5% HSA, 10% FBS or 5% Trehalose), and aliquot the reconstituted protein solution to minimize free-thaw cycles.

Contact

☎ | 400-999-6126

✉ | cn.market@abclonal.com.cn

🌐 | www.abclonal.com.cn

Background

Mesothelin, also known as MSLN, is a protein that in humans is encoded by the MSLN gene. Cloning studies showed that the mesothelin gene encodes a precursor protein that is processed to yield mesothelin which is attached to the cell membrane by a glycoposphatidylinositol linkage and a 31-kDa shed fragment named megakaryocyte-potentiating factor (MPF). Although it has been proposed that mesothelin may be involved in cell adhesion, its biological function is not known. A knockout mouse line that lacks mesothelin reproduces and develops normally.

Basic Information

Description

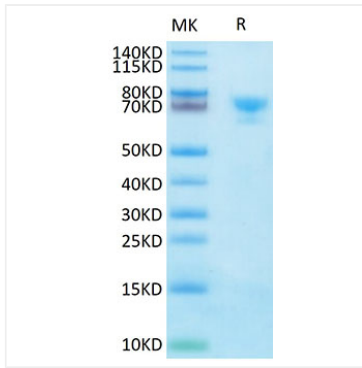
Biotinylated Recombinant Human Mesothelin/MSLN Protein is produced by Expi293 expression system. The target protein is expressed with sequence (Glu296-Gly580) of Human Mesothelin fused with a hFc tag and Avi tag at the C-terminal.

Bio-Activity

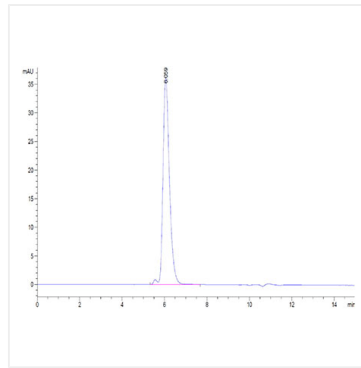
Storage

Store at -20°C. Store the lyophilized protein at -20°C to -80°C up to 1 year from the date of receipt. After reconstitution, the protein solution is stable at -20°C for 3 months, at 2-8°C for up to 1 week. Avoid repeated freeze/thaw cycles.

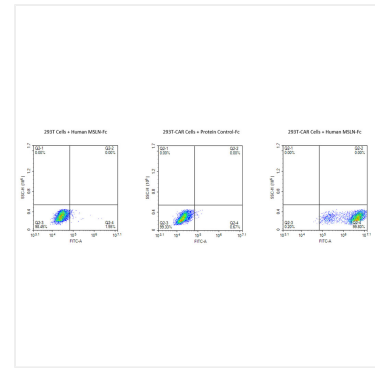
Validation Data



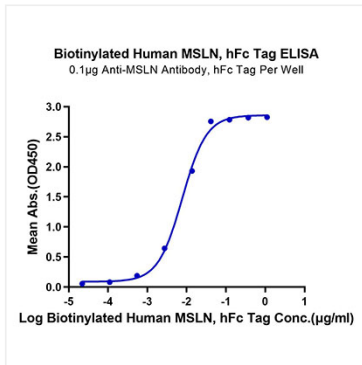
Biotinylated Human MSLN on Tris-Bis PAGE under reduced condition. The purity is greater than 95%.



The purity of Biotinylated Human MSLN is greater than 95% as determined by SEC-HPLC.



Use Biotinylated Human MSLN-hFc-Avi protein to detect the expression rate of Anti-MSLN-CAR positive cell. 293T cells and anti-MSLN CAR-293T cells were incubated with Biotinylated human MSLN-hFc-Avi Tag. Non-transfected 293T cells and Fc-labeled protein control were used as negative control. SA-FITC was used to evaluate the binding activity of Biotinylated Human MSLN.



Immobilized Anti-MSLN Antibody, hFc Tag at $1\mu\text{g/ml}$ ($100\mu\text{l/well}$) on the plate. Dose response curve for Biotinylated Human MSLN, hFc Tag with the EC_{50} of 7.7ng/ml determined by ELISA.