

# Biotinylated Recombinant Human B7-H1/PD-L1/CD274 Protein

Catalog No.: RP02473 **Recombinant**

## Sequence Information

Species	Gene ID	Swiss Prot
Human	29126	Q9NZQ7

### Tags

C-His&Avi

### Synonyms

B7-H; B7H1; PDL1; PD-L1; hPD-L1; PDCD1L1; PDCD1LG1;CD274;PDL1;B7H1;PD-L1;PDCD1L1;PDCD1LG1; B7-H; CD274 molecule

## Product Information

Source	Purification
HEK293 cells	> 95% by Tris-Bis PAGE;> 95% by SEC-HPLC

### Endotoxin

< 1 EU/μg of the protein by LAL method.

### Formulation

Lyophilized from a 0.22 μm filtered solution of PBS, pH 7.4.

### Reconstitution

Centrifuge the tube before opening. Reconstitute to a concentration of 0.1-0.5 mg/mL in sterile distilled water. Avoid vortex or vigorously pipetting the protein. For long term storage, it is recommended to add a carrier protein or stabilizer (e.g. 0.1% BSA, 5% HSA, 10% FBS or 5% Trehalose), and aliquot the reconstituted protein solution to minimize free-thaw cycles.

## Contact

 | 400-999-6126

 | [cn.market@abclonal.com.cn](mailto:cn.market@abclonal.com.cn)

 | [www.abclonal.com.cn](http://www.abclonal.com.cn)

## Background

### Basic Information

#### Description

Biotinylated Recombinant Human PD-L1 Protein is produced by Expi293 expression system. The target protein is expressed with sequence (Phe19-Arg238) of Human PD-L1 fused with His tag and Avi tag at the C-terminal.

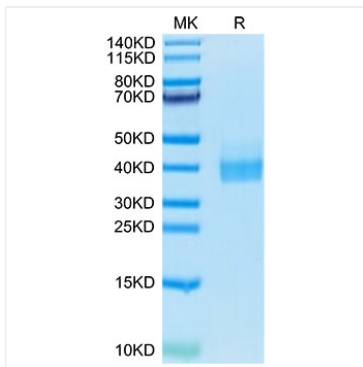
#### Bio-Activity

Immobilized Biotinylated Human PD-L1 at 0.5 μg/mL (100 μL/Well). Dose response curve for Anti-PD-L1 Ab with the EC<sub>50</sub> of 11.3 ng/mL determined by ELISA.

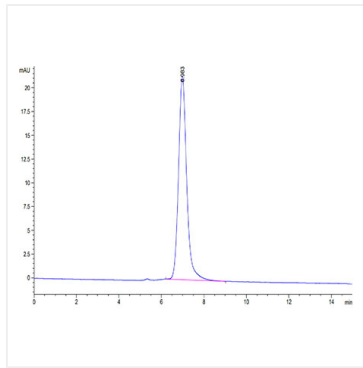
#### Storage

Store the lyophilized protein at -20°C to -80°C for long term. After reconstitution, the protein solution is stable at -20°C for 3 months, at 2-8°C for up to 1 week. Avoid repeated freeze/thaw cycles.

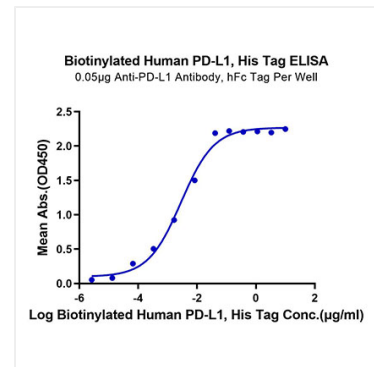
## Validation Data



Biotinylated Human PD-L1 on Tris-Bis PAGE under reduced condition. The purity is greater than 95%.



The purity of Biotinylated Human PD-L1 is greater than 95% as determined by SEC-HPLC.



Immobilized Anti-PD-L1 Antibody, hFc Tag at 0.5µg/ml (100µl/Well) on the plate. Dose response curve for Biotinylated Human PD-L1, His Tag with the EC<sub>50</sub> of 2.8ng/ml determined by ELISA.