

# Recombinant Human Siglec-8 Protein

Catalog No.: RP02494 **Recombinant**

## Sequence Information

| Species | Gene ID | Swiss Prot |
|---------|---------|------------|
| Human   | 27181   | Q9NYZ4     |

### Tags

C-His

### Synonyms

Siglec-8;SAF2; SIGLEC-8;  
SIGLEC8L;SIGLEC8;SIGLEC-8;SIGLEC8L

## Product Information

| Source       | Purification       |
|--------------|--------------------|
| HEK293 cells | > 97% by SDS-PAGE. |

| Calculated MW | Observed MW |
|---------------|-------------|
| 38.53 kDa     | 45-60 kDa   |

### Endotoxin

< 0.01 EU/μg of the protein by LAL method.

### Formulation

Lyophilized from a 0.22 μm filtered solution of PBS, pH 7.4.

### Reconstitution

Centrifuge the tube before opening. Reconstitute to a concentration of 0.1-0.5 mg/mL in sterile distilled water. Avoid vortex or vigorously pipetting the protein. For long term storage, it is recommended to add a carrier protein or stabilizer (e.g. 0.1% BSA, 5% HSA, 10% FBS or 5% Trehalose), and aliquot the reconstituted protein solution to minimize free-thaw cycles.

## Contact

 | 400-999-6126

 | [cn.market@abclonal.com.cn](mailto:cn.market@abclonal.com.cn)

 | [www.abclonal.com.cn](http://www.abclonal.com.cn)

## Background

### Basic Information

#### Description

Recombinant Human Siglec-8 Protein is produced by HEK293 cells expression system. The target protein is expressed with sequence (Met17-Ala363) of Human siglec 8 fused with a His tag tag at the C-terminal.

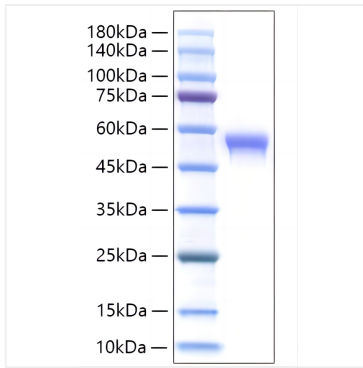
#### Bio-Activity

#### Storage

Store at -20°C. Store the lyophilized protein at -20°C to -80 °C up to 1 year from the date of receipt. After reconstitution, the protein solution is stable at -20°C for 3 months, at 2-8°C for up to 1 week. Avoid repeated freeze/thaw cycles.

## Validation Data

---



Recombinant Human Siglec-8/SAF-2 Protein was determined by SDS-PAGE with Coomassie Blue, showing a band at 45-60 kDa.