

Recombinant Human IL-20 Protein

Catalog No.: RP02507 **Recombinant**

Sequence Information

Species	Gene ID	Swiss Prot
Human	50604	Q9NYY1

Tags

C-His

Synonyms

IL20;IL-20;IL10D;ZCYTO10

Product Information

Source	Purification
<i>E. coli</i>	> 98% by SDS-PAGE.

Endotoxin

< 0.1 EU/μg of the protein by LAL method.

Formulation

Lyophilized from a 0.22 μm filtered solution of PBS, pH 7.4.

Reconstitution

Centrifuge the vial before opening. Reconstitute to a concentration of 0.1-0.5 mg/mL in sterile distilled water. Avoid vortex or vigorously pipetting the protein. For long term storage, it is recommended to add a carrier protein or stabilizer (e.g. 0.1% BSA, 5% HSA, 10% FBS or 5% Trehalose), and aliquot the reconstituted protein solution to minimize free-thaw cycles.

Contact

 | 400-999-6126

 | cn.market@abclonal.com.cn

 | www.abclonal.com.cn

Background

Interleukin 20 (IL20) is a cytokine structurally related to interleukin 10 (IL-10). This cytokine has been shown to transduce its signal through signal transducer and activator of transcription 3 (STAT3) in keratinocytes. A specific receptor for this cytokine is found to be expressed in skin and upregulated dramatically in psoriatic skin, suggesting a role for this protein in epidermal function and psoriasis.

Basic Information

Description

Recombinant Human IL-20 Protein is produced by Escherichia coli expression system. The target protein is expressed with sequence of Human IL-20 fused with polyhistidine tag at the C-terminus

Bio-Activity

Measured by its ability to chemoattract BaF3 cells transfected with human IL-20R alpha and IL-20R beta. The ED₅₀ for this effect is <0.2 ng/mL.

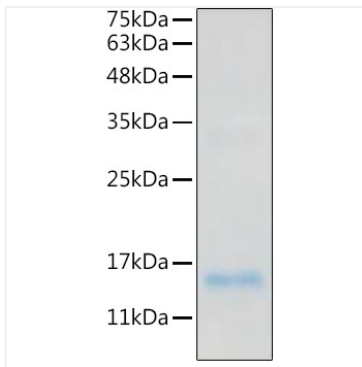
Storage

Store the lyophilized protein at -20°C to -80°C for long term.

After reconstitution, the protein solution is stable at -20°C for 3 months, at 2-8°C for up to 1 week.

Avoid repeated freeze/thaw cycles.

Validation Data



Recombinant Human IL-20 Protein was determined by SDS-PAGE with Coomassie Blue, showing a band at 15kDa.