

Recombinant Human/Mouse/Rat BMP-2 Protein

Catalog No.: RP02510 **Recombinant**

Sequence Information

Species	Gene ID	Swiss Prot
Human	650	P12643

Tags

C-His

Synonyms

BDA2;BMP2A;BMP2

Product Information

Source	Purification
<i>E. coli</i>	> 95% by SDS-PAGE.

Endotoxin

<0.1EU/μg

Formulation

Lyophilized from a 0.22 μm filtered solution of 20 mM sodium citrate, 0.2 M NaCl, pH 3.5.

Reconstitution

Centrifuge the vial before opening. Reconstitute to a concentration of 0.1-0.5 mg/mL in sterile distilled water. Avoid vortex or vigorously pipetting the protein. For long term storage, it is recommended to add a carrier protein or stabilizer (e.g. 0.1% BSA, 5% HSA, 10% FBS or 5% Trehalose), and aliquot the reconstituted protein solution to minimize freeze-thaw cycles.

Contact

☎ | 400-999-6126

✉ | cn.market@abclonal.com.cn

🌐 | www.abclonal.com.cn

Background

BMP-2 like other bone morphogenetic proteins, plays an important role in the development of bone and cartilage. It is involved in the hedgehog pathway, TGF beta signaling pathway, and in cytokine-cytokine receptor interaction. It is also involved in cardiac cell differentiation and epithelial to mesenchymal transition. Like many other proteins from the BMP family, BMP-2 has been demonstrated to potently induce osteoblast differentiation in a variety of cell types. BMP-2 may be involved in white adipogenesis and may have metabolic effects

Basic Information

Description

Recombinant Human/Mouse/Rat BMP-2 Protein is produced by Escherichia coli expression system. The target protein is expressed with sequence of Human BMP-2 fused with polyhistidine tag at the C-terminus

Bio-Activity

Measured by its ability to inhibit alkaline phosphatase production by ATDC5 cells. The ED₅₀ for this effect is <9.5 ng/mL. The specific activity of recombinant BMP-2 is > 3.2 x 10⁶ IU/mg.

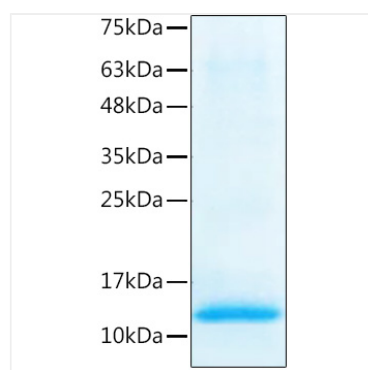
Storage

Store the lyophilized protein at -20°C to -80°C for long term.

After reconstitution, the protein solution is stable at -20°C for 3 months, at 2-8°C for up to 1 week.

Avoid repeated freeze/thaw cycles.

Validation Data



Recombinant Human/Mouse/Rat BMP-2
Protein was determined by SDS-PAGE with
Coomassie Blue, showing bands at 15 kDa.