

# Biotinylated Recombinant Human CD3 epsilon/CD3E Protein

Catalog No.: RP02577 **Recombinant**

## Sequence Information

Species	Gene ID	Swiss Prot
Human		P07766

### Tags

C-His&Avi

### Synonyms

CD3ε; CD3E; T3E; FLJ18683; TCRE; CD3-epsilon; IMD18

## Product Information

### Source

HEK293 cells

### Purification

> 95% as determined by Tris-Bis PAGE > 95% as determined by HPLC

### Endotoxin

Less than 1EU per µg by the LAL method.

### Formulation

### Reconstitution

Centrifuge the tube before opening. Reconstitute to a concentration of 0.1-0.5 mg/mL in sterile distilled water. Avoid vortex or vigorously pipetting the protein. For long term storage, it is recommended to add a carrier protein or stabilizer (e.g. 0.1% BSA, 5% HSA, 10% FBS or 5% Trehalose), and aliquot the reconstituted protein solution to minimize free-thaw cycles.

## Contact

 | 400-999-6126

 | [cn.market@abclonal.com.cn](mailto:cn.market@abclonal.com.cn)

 | [www.abclonal.com.cn](http://www.abclonal.com.cn)

## Background

CD3E, is a single-pass type I membrane protein. CD3 (cluster of differentiation 3) T cell co-receptor helps to activate both the cytotoxic T cell (CD8 naive T cells) and also T helper cells (CD4 naive T cells). It consists of a protein complex and is composed of four distinct chains. In mammals, the complex contains a CD3γ chain, a CD3δ chain, and two CD3ε chains.

## Basic Information

### Description

Recombinant Biotinylated Human CD3E/CD3 epsilon 1-27 peptide Protein is expressed from Expi293 with hFc tag and Avi Tag at the C-terminal. It contains Asp23-Thr48.

### Bio-Activity

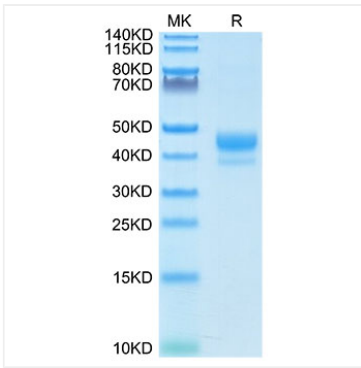
### Storage

Store the lyophilized protein at -20°C to -80°C for long term.

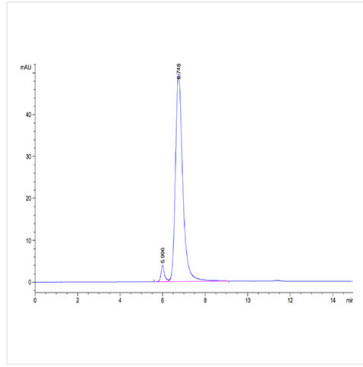
After reconstitution, the protein solution is stable at -20°C for 3 months, at 2-8°C for up to 1 week.

Avoid repeated freeze/thaw cycles.

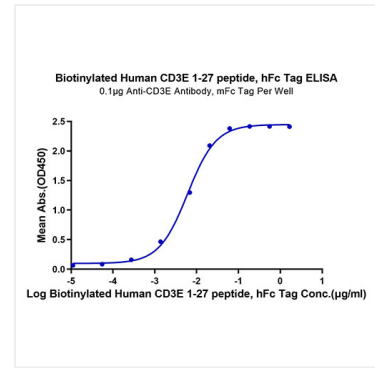
## Validation Data



Biotinylated Human CD3E 1-27 peptide on Tris-Bis PAGE under reduced condition. The purity is greater than 95%.



The purity of Biotinylated Human CD3E 1-27 peptide is greater than 95% as determined by SEC-HPLC.



Immobilized Anti-CD3 Antibody, mFc Tag at 1µg/ml (100µl/well) on the plate. Dose response curve for Biotinylated Human CD3E 1-27 peptide, hFc Tag with the EC<sub>50</sub> of 5.9ng/ml determined by ELISA.