

Biotinylated Recombinant Human IL-2RG/CD132 Protein

Catalog No.: RP02580 **Recombinant**

Sequence Information

Species	Gene ID	Swiss Prot
Human		P31785-1

Tags

C-His&Avi

Synonyms

CD132; CIDX; IL-2 R gamma; IL2RG; IMD4; P64; SCIDX; SCIDX1; gammaC

Product Information

Source

HEK293 cells

Purification

> 95% as determined by Tris-Bis PAGE > 95% as determined by HPLC

Endotoxin

Less than 1EU per µg by the LAL method.

Formulation

Reconstitution

Centrifuge the tube before opening. Reconstitute to a concentration of 0.1-0.5 mg/mL in sterile distilled water. Avoid vortex or vigorously pipetting the protein. For long term storage, it is recommended to add a carrier protein or stabilizer (e.g. 0.1% BSA, 5% HSA, 10% FBS or 5% Trehalose), and aliquot the reconstituted protein solution to minimize free-thaw cycles.

Contact

☎ | 400-999-6126

✉ | cn.market@abclonal.com.cn

🌐 | www.abclonal.com.cn

Background

The gamma chain of the high affinity functional human IL-2 receptor complex belongs to the hematopoietin receptor family. IL-2 R gamma is a 369 amino acid residue protein consisting of a 22 residue signal sequence, a 232 residue extracellular domain, a 29 residue transmembrane domain and an 86 residue cytoplasmic domain. Although IL-2 R gamma by itself does not bind IL-2 with any appreciable affinity, it is required for IL-2 receptor signaling.

Basic Information

Description

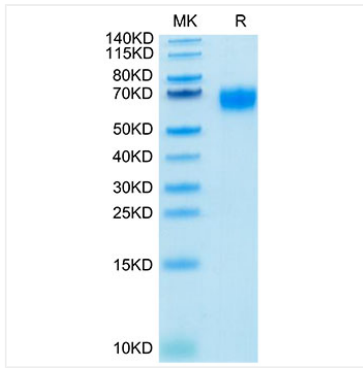
Recombinant Biotinylated Human IL-2 R gamma/CD132 Protein is expressed from Expi293 with His tag and Avi tag at the C-terminal. It contains Leu23-Asn254.

Bio-Activity

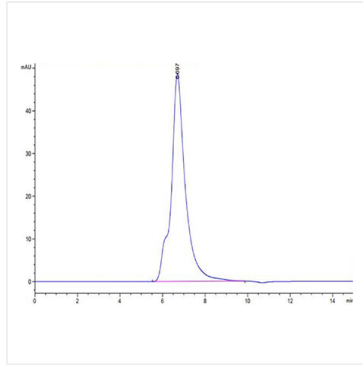
Storage

Store the lyophilized protein at -20°C to -80°C for long term. After reconstitution, the protein solution is stable at -20°C for 3 months, at 2-8°C for up to 1 week. Avoid repeated freeze/thaw cycles.

Validation Data



Biotinylated Human IL-2 R gamma on Tris-Bis PAGE under reduced condition. The purity is greater than 95%.



The purity of Biotinylated Human IL-2 R gamma is greater than 95% as determined by SEC-HPLC.