

Biotinylated Recombinant Human Latent TGF-beta 1(C33S) Protein

Catalog No.: RP02605 **Recombinant**

Sequence Information

| Species | Gene ID | Swiss Prot |
|---------|---------|------------|
| Human | 7040 | P01137 |

Tags

N-His&Avi

Synonyms

CEDLAP; DPD1; TGF beta1; TGFB; TGFB1; TGFbeta; TGF-beta-1

Product Information

Source

HEK293 cells

Purification

> 95% as determined by Tris-Bis PAGE > 93% as determined by HPLC

Endotoxin

Less than 1EU per µg by the LAL method.

Formulation

Reconstitution

Centrifuge the tube before opening. Reconstitute to a concentration of 0.1-0.5 mg/mL in sterile distilled water. Avoid vortex or vigorously pipetting the protein. For long term storage, it is recommended to add a carrier protein or stabilizer (e.g. 0.1% BSA, 5% HSA, 10% FBS or 5% Trehalose), and aliquot the reconstituted protein solution to minimize free-thaw cycles.

Contact

☎ | 400-999-6126

✉ | cn.market@abclonal.com.cn

🌐 | www.abclonal.com.cn

Background

Latent TGF beta 1 cDNA encodes a 390 amino acid precursor that contains a 29 aa signal peptide and a 361 aa proprotein. A furin-like convertase processes the proprotein to generate an N-terminal 249 aa latency-associated peptide (LAP) and a C-terminal 112 aa mature TGF-beta 1. Disulfide-linked homodimers of LAP and TGF-beta 1 remain non-covalently associated after secretion, forming the small latent TGF-beta 1 complex.

Basic Information

Description

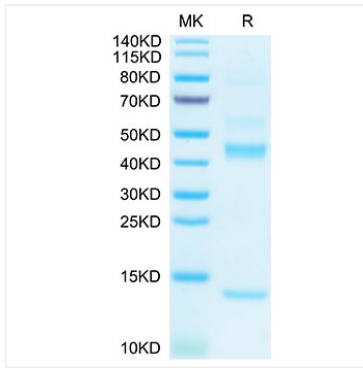
Recombinant Biotinylated Human Latent TGF beta 1/TGFB1 Protein is expressed from Expi293 with His tag and Avi tag at the N-terminal. It contains Leu30-Ser390(C33S).

Bio-Activity

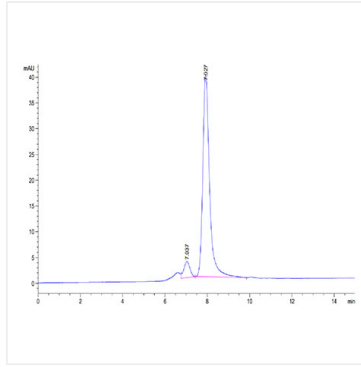
Storage

Store the lyophilized protein at -20°C to -80°C for long term. After reconstitution, the protein solution is stable at -20°C for 3 months, at 2-8°C for up to 1 week. Avoid repeated freeze/thaw cycles.

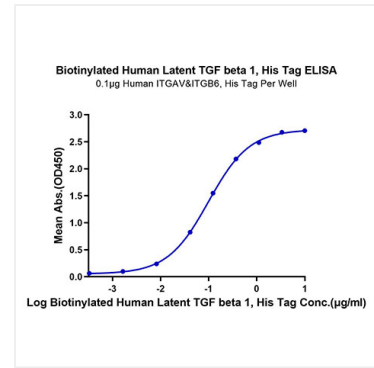
Validation Data



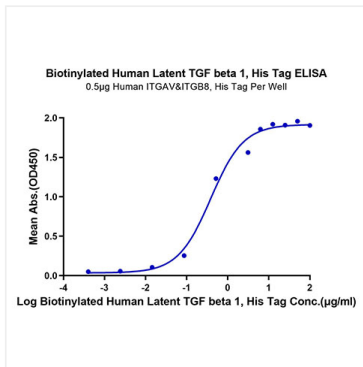
Biotinylated Human Latent TGF beta 1 on Tris-Bis PAGE under reduced condition. The purity is greater than 95%.



The purity of Biotinylated Human Latent TGF beta 1 is greater than 93% as determined by SEC-HPLC.



Immobilized Human ITGAV&ITGB6, His Tag at 1µg/ml (100µl/Well) on the plate. Dose response curve for Biotinylated Human Latent TGF beta 1, His Tag with the EC₅₀ of 0.10µg/ml determined by ELISA.



Immobilized Human ITGAV&ITGB8, His Tag at 5µg/ml (100µl/well) on the plate. Dose response curve for Biotinylated Human Latent TGF beta 1, His Tag with the EC₅₀ of 0.39µg/mL determined by ELISA.