

# Recombinant Mouse BAMBI Protein

Catalog No.: RP02614 **Recombinant**

## Sequence Information

Species	Gene ID	Swiss Prot
Mouse	68010	Q9D0L6

### Tags

C-hFc

### Synonyms

Nma; Bambi

## Product Information

Source	Purification
HEK293 cells	> 95% as determined by Tris-Bis PAGE > 95% as determined by HPLC

### Endotoxin

Less than 1EU per µg by the LAL method.

### Formulation

#### Reconstitution

Centrifuge the tube before opening. Reconstitute to a concentration of 0.1-0.5 mg/mL in sterile distilled water. Avoid vortex or vigorously pipetting the protein. For long term storage, it is recommended to add a carrier protein or stabilizer (e.g. 0.1% BSA, 5% HSA, 10% FBS or 5% Trehalose), and aliquot the reconstituted protein solution to minimize free-thaw cycles.

## Contact

 | 400-999-6126

 | [cn.market@abclonal.com.cn](mailto:cn.market@abclonal.com.cn)

 | [www.abclonal.com.cn](http://www.abclonal.com.cn)

## Background

Bone morphogenic protein and activin membrane-bound inhibitor (BAMBI) is a transmembrane protein that affects the growth, development and muscle regeneration of the body by regulating the TGF-β, BMP and Wnt signaling pathways. In brief, BAMBI may be a functional gene for the differentiation of bovine preadipocytes and myoblasts, and variations in the BAMBI genomic region, especially the combined haplotype H1H4, may benefit marker-assisted selection in cattle.

## Basic Information

### Description

Recombinant Mouse BAMBI Protein is expressed from Expi293 with hFc tag at the C-terminal. It contains Glu27-Ala152.

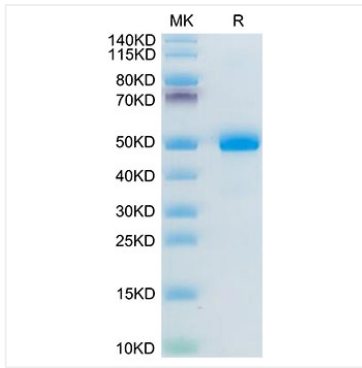
### Bio-Activity

#### Storage

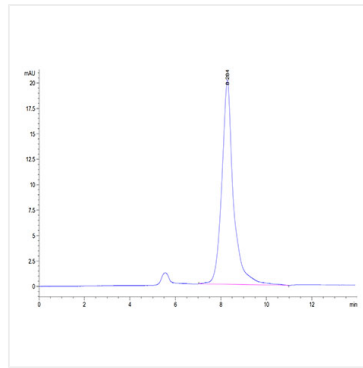
Store the lyophilized protein at -20°C to -80°C for long term. After reconstitution, the protein solution is stable at -20°C for 3 months, at 2-8°C for up to 1 week. Avoid repeated freeze/thaw cycles.

## Validation Data

---



Mouse BAMBI on Tris-Bis PAGE under reduced condition. The purity is greater than 95%.



The purity of Mouse BAMBI is greater than 95% as determined by SEC-HPLC.