

Recombinant Human IL-18RAP Protein

Catalog No.: RP02619 **Recombinant**

Sequence Information

Species	Gene ID	Swiss Prot
Human	8807	O95256-1

Tags

C-hFc

Synonyms

ACPL; CD218b; CDw218b; IL-18R-beta;
IL-18RAcP; IL-18Rbeta; IL-1R-7; IL-1R7;
IL-1RAcPL; IL18RB; IL18RAP; IL-18R-bet

Product Information

Source	Purification
HEK293 cells	> 95% as determined by Tris-Bis PAGE > 95% as determined by HPLC

Endotoxin

Less than 1EU per µg by the LAL method.

Formulation

Reconstitution

Centrifuge the tube before opening.
Reconstitute to a concentration of 0.1-0.5 mg/mL in sterile distilled water. Avoid vortex or vigorously pipetting the protein. For long term storage, it is recommended to add a carrier protein or stabilizer (e.g. 0.1% BSA, 5% HSA, 10% FBS or 5% Trehalose), and aliquot the reconstituted protein solution to minimize freeze-thaw cycles.

Contact

 | 400-999-6126

 | cn.market@abclonal.com.cn

 | www.abclonal.com.cn

Background

lactoferrin (LTF), peptidoglycan recognition protein 1 and IL-18 receptor accessory protein (IL18RAP) remained significantly elevated in peripheral monocytes of hypertensive individuals in a separate validation cohort. Interestingly, IL18RAP expression associated with MAP in a cohort of African Americans..

Basic Information

Description

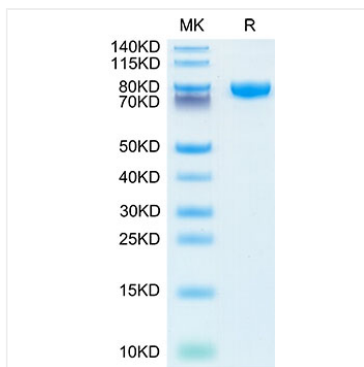
Recombinant Human IL-18RAP Protein is expressed from Expi293 with hFc tag at the C-terminal. It contains Phe20-Arg356.

Bio-Activity

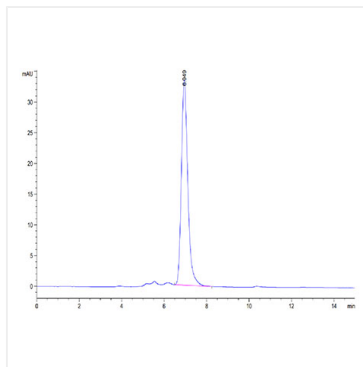
Storage

Store the lyophilized protein at -20°C to -80°C for long term.
After reconstitution, the protein solution is stable at -20°C for 3 months, at 2-8°C for up to 1 week.
Avoid repeated freeze/thaw cycles.

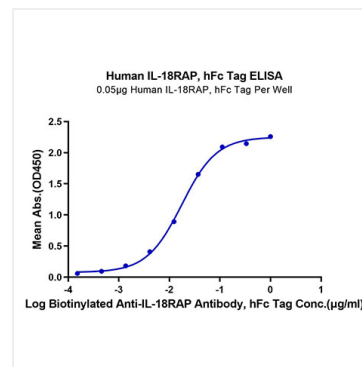
Validation Data



Human IL-18RAP on Tris-Bis PAGE under reduced condition. The purity is greater than 95%.



The purity of Human IL-18RAP is greater than 95% as determined by SEC-HPLC.



Immobilized Human IL-18RAP, hFc Tag at 0.5µg/ml (100µl/well) on the plate. Dose response curve for Biotinylated Anti-IL-18RAP Antibody, hFc Tag with the EC_{50} of 17.6ng/ml determined by ELISA.