

# Recombinant Human B7-H7/HHLA2 Protein

Catalog No.: RP02620 **Recombinant**

## Sequence Information

Species	Gene ID	Swiss Prot
Human	11148	Q9UM44-1

### Tags

C-hFc

### Synonyms

B7H7; B7-H7; HHLA2; B7 Homolog 7

## Product Information

Source	Purification
HEK293 cells	> 95% as determined by Tris-Bis PAGE > 95% as determined by HPLC

Calculated MW	Observed MW
63.7 kDa	78-100 kDa

### Endotoxin

Less than 1EU per µg by the LAL method.

### Formulation

#### Reconstitution

Centrifuge the tube before opening. Reconstitute to a concentration of 0.1-0.5 mg/mL in sterile distilled water. Avoid vortex or vigorously pipetting the protein. For long term storage, it is recommended to add a carrier protein or stabilizer (e.g. 0.1% BSA, 5% HSA, 10% FBS or 5% Trehalose), and aliquot the reconstituted protein solution to minimize freeze-thaw cycles.

## Contact

☎ | 400-999-6126

✉ | [cn.market@abclonal.com.cn](mailto:cn.market@abclonal.com.cn)

🌐 | [www.abclonal.com.cn](http://www.abclonal.com.cn)

## Background

B7-H7, also known as HHLA2 (HERV-H LTR-associating 2), is a member of the B7 family of immune regulatory proteins. Through interaction with TMIGD2, costimulates T-cells in the context of TCR-mediated activation. Enhances T-cell proliferation and cytokine production via an AKT-dependent signaling cascade.

## Basic Information

### Description

Recombinant Human B7-H7/HHLA2 Protein is expressed from Expi293 with hFc tag at the C-terminal. It contains Ile23-Asn344.

### Bio-Activity

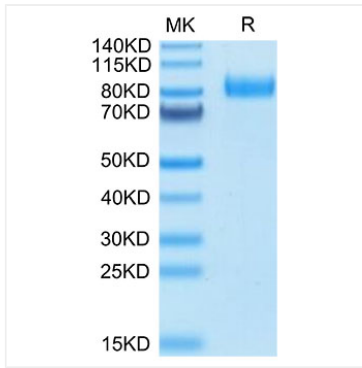
#### Storage

Store at -20°C. Store the lyophilized protein at -20°C to -80 °C up to 1 year from the date of receipt.

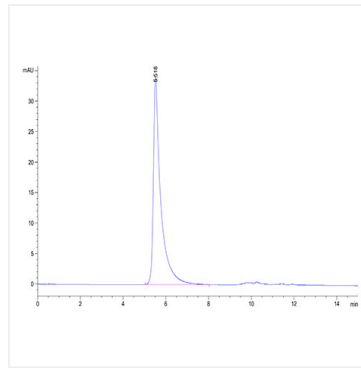
After reconstitution, the protein solution is stable at -20°C for 3 months, at 2-8°C for up to 1 week.

Avoid repeated freeze/thaw cycles.

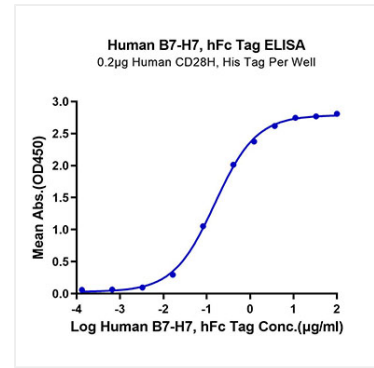
## Validation Data



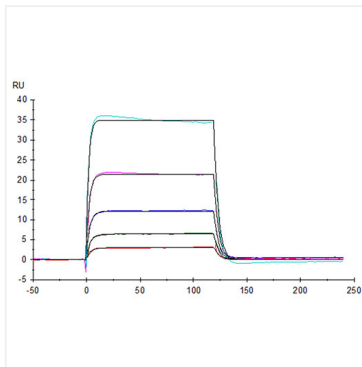
Human B7-H7 on Tris-Bis PAGE under reduced condition. The purity is greater than 95%.



The purity of Human B7-H7 is greater than 95% as determined by SEC-HPLC.



Human B7-H7, hFc Tag ELISA  
0.2µg Human CD28H, His Tag Per Well  
Immobilized Human CD28H, His Tag at 2µg/ml (100µl/well) on the plate. Dose response curve for Human B7-H7, hFc Tag with the EC<sub>50</sub> of 0.15µg/ml determined by ELISA.



Human B7-H7, hFc Tag captured on CM5 Chip via Protein A can bind Human KIR3DL3, His Tag with an affinity constant of 334 nM as determined in SPR assay (Biacore T200).