

Recombinant Human GFR alpha-like/GFRAL Protein

Catalog No.: RP02625 **Recombinant**

Sequence Information

Species	Gene ID	Swiss Prot
Human	389400	Q6UXV0

Tags

C-hFc

Synonyms

GFR alpha-like; GFRAL; GRAL; C6orf144

Product Information

Source	Purification
HEK293 cells	> 95% as determined by Tris-Bis PAGE > 95% as determined by HPLC

Calculated MW	Observed MW
64.6 kDa	70-80 kDa

Endotoxin

Less than 1EU per µg by the LAL method.

Formulation

Reconstitution

Centrifuge the tube before opening. Reconstitute to a concentration of 0.1-0.5 mg/mL in sterile distilled water. Avoid vortex or vigorously pipetting the protein. For long term storage, it is recommended to add a carrier protein or stabilizer (e.g. 0.1% BSA, 5% HSA, 10% FBS or 5% Trehalose), and aliquot the reconstituted protein solution to minimize free-thaw cycles.

Contact

☎ | 400-999-6126

✉ | cn.market@abclonal.com.cn

🌐 | www.abclonal.com.cn

Background

GFR alpha-like (GDNF receptor-alpha-like) is a distant member of the GDNFR family of proteins. Mature human GFR alpha-like is a 376 amino acid (aa) type I transmembrane protein. It contains a 333 aa extracellular domain, a 20 aa transmembrane domain and a 23 aa cytoplasmic domain. GFRAL is a brainstem-restricted receptor for GDF15 which regulates food intake, energy expenditure and body weight in response to metabolic and toxin-induced stresses.

Basic Information

Description

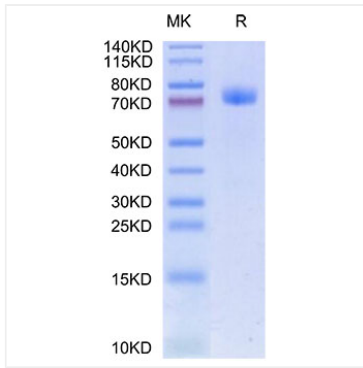
Recombinant Human GFR alpha-like/GFRAL Protein is produced by HEK293 cells expression system. The target protein is expressed with sequence (Ser19-Glu351) of Human GFR alpha-like/GFRAL (Accession #) fused with hFc tag at the C-terminal.

Bio-Activity

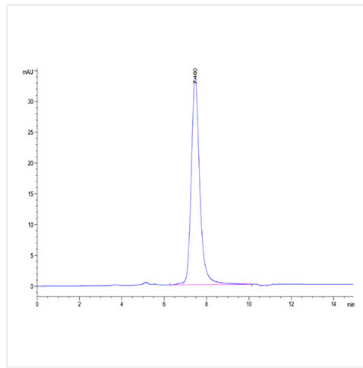
Storage

Store at -20°C. Store the lyophilized protein at -20°C to -80 °C up to 1 year from the date of receipt. After reconstitution, the protein solution is stable at -20°C for 3 months, at 2-8°C for up to 1 week. Avoid repeated freeze/thaw cycles.

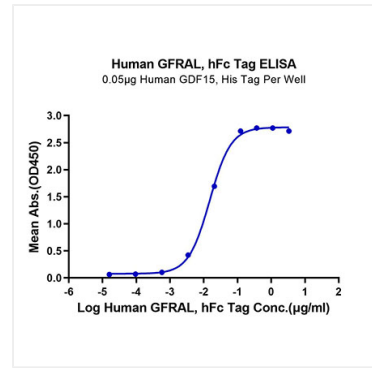
Validation Data



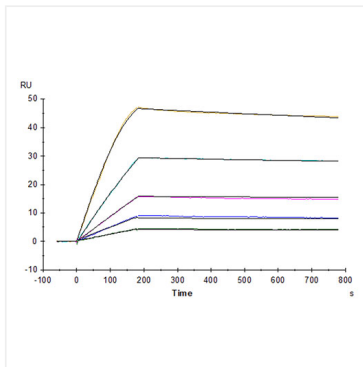
Human GFRAL on Tris-Bis PAGE under reduced condition. The purity is greater than 95%.



The purity of Human GFRAL is greater than 95% as determined by SEC-HPLC.



Immobilized Human GDF15, His Tag at 0.5µg/ml (100µl/well) on the plate. Dose response curve for Human GFRAL, hFc Tag with the EC₅₀ of 15ng/ml determined by ELISA.



Human GFRAL, hFc Tag captured on CM5 Chip via Protein A can bind Human GDF15, His Tag with an affinity constant of 0.014 nM as determined in SPR assay (Biacore T200).