

# Recombinant Rhesus macaque LILRB1/ILT-2/CD85j Protein

**Catalog No.: RP02631** **Recombinant**

## Sequence Information

Species	Gene ID	Swiss Prot
Rhesus macaque	692340	F7H3G7

### Tags

C-His

### Synonyms

ILT2; ILT-2; ILT2FLJ37515; LILRB1; LIR1; MIR7; CD85j; XXbac-BCX85G21.4

## Product Information

Source	Purification
HEK293 cells	> 95% as determined by Tris-Bis PAGE > 95% as determined by HPLC

### Endotoxin

Less than 1EU per µg by the LAL method.

### Formulation

### Reconstitution

Centrifuge the tube before opening. Reconstitute to a concentration of 0.1-0.5 mg/mL in sterile distilled water. Avoid vortex or vigorously pipetting the protein. For long term storage, it is recommended to add a carrier protein or stabilizer (e.g. 0.1% BSA, 5% HSA, 10% FBS or 5% Trehalose), and aliquot the reconstituted protein solution to minimize free-thaw cycles.

## Contact

☎		400-999-6126
✉		cn.market@abclonal.com.cn
🌐		www.abclonal.com.cn

## Background

LILRB1, also known as CD85j and ILT2, is a 110 kDa transmembrane glycoprotein in the LILR immunoregulatory protein family. Mature human LILRB1 consists of a 438 amino acid (aa) extracellular domain (ECD) with 4 tandem Ig-like domains, a 21 aa transmembrane segment, and a 168 aa cytoplasmic domain with 4 inhibitory ITIM motifs. LILRB1 is a receptor for class I MHC antigens. Recognizes a broad spectrum of HLA-A, HLA-B, HLA-C, HLA-G and HLA-F alleles. Receptor for H301/UL18, a human cytomegalovirus class I MHC homolog. Ligand binding results in inhibitory signals and down-regulation of the immune response.

## Basic Information

### Description

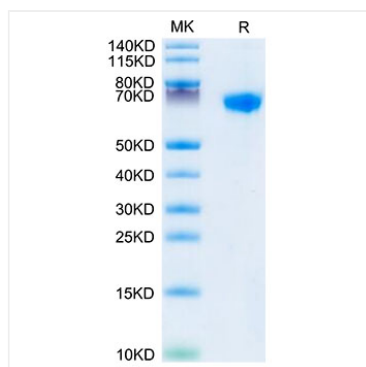
Recombinant Rhesus macaque LILRB1/ILT-2/CD85j Protein is produced by HEK293 cells expression system. The target protein is expressed with sequence (Ser17-His456) of rhesus macaque LILRB1/ILT-2/CD85j (Accession #F7H3G7) fused with His tag at the C-terminus.

### Bio-Activity

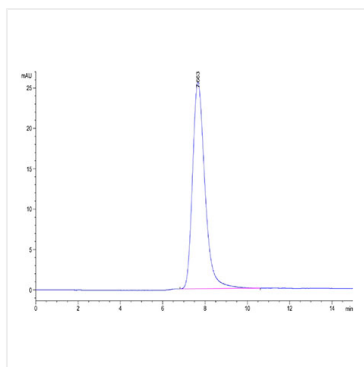
### Storage

Store at -20°C. Store the lyophilized protein at -20°C to -80 °C up to 1 year from the date of receipt. After reconstitution, the protein solution is stable at -20°C for 3 months, at 2-8°C for up to 1 week. Avoid repeated freeze/thaw cycles.

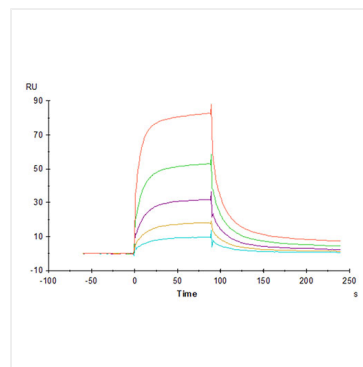
## Validation Data



Rhesus macaque LILRB1 on Tris-Bis PAGE under reduced condition. The purity is greater than 95%.



The purity of Rhesus macaque LILRB1/CD85j/ILT2 is greater than 95% as determined by SEC-HPLC.



Anti-LILRB1 Antibody, hFc Tag captured on CM5 Chip via Protein A can bind Rhesus macaque LILRB1, His Tag with an affinity constant of 215.30 nM as determined in SPR assay (Biacore T200).