

# Recombinant Cynomolgus NKp46/NCR1/CD335 Protein

Catalog No.: RP02642 **Recombinant**

## Sequence Information

**Species** Cynomolgus  
**Gene ID** 102115479  
**Swiss Prot** Q95JB9

### Tags

C-His

### Synonyms

CD335; Ly94; NCR1; NKp46; MAR-1;  
NKP46FLJ99094

## Product Information

Source	Purification
HEK293 cells	> 95% as determined by Tris-Bis PAGE > 95% as determined by HPLC

Calculated MW	Observed MW
27.4 kDa	35-45 kDa

### Endotoxin

Less than 1EU per µg by the LAL method.

### Formulation


#### Reconstitution

Centrifuge the tube before opening.  
Reconstitute to a concentration of 0.1-0.5 mg/mL in sterile distilled water. Avoid vortex or vigorously pipetting the protein. For long term storage, it is recommended to add a carrier protein or stabilizer (e.g. 0.1% BSA, 5% HSA, 10% FBS or 5% Trehalose), and aliquot the reconstituted protein solution to minimize free-thaw cycles.

## Contact

 | 400-999-6126

 | [cn.market@abclonal.com.cn](mailto:cn.market@abclonal.com.cn)

 | [www.abclonal.com.cn](http://www.abclonal.com.cn)

## Background

NKp46, along with NKp30 and NKp44, are activating receptors that have been collectively termed the natural cytotoxicity receptors (NCR). These receptors lack significant sequence homology to one another. They are expressed almost exclusively by NK cells and play a major role in triggering some of the key lytic activities of NK cells.

## Basic Information

### Description

Recombinant Cynomolgus NKp46/NCR1/CD335 Protein is expressed from Expi293 with His tag at the C-terminal. It contains Ala22-Asn254.

### Bio-Activity

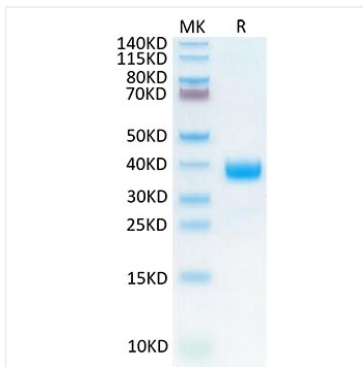
#### Storage

Store at -20°C. Store the lyophilized protein at -20°C to -80 °C up to 1 year from the date of receipt.

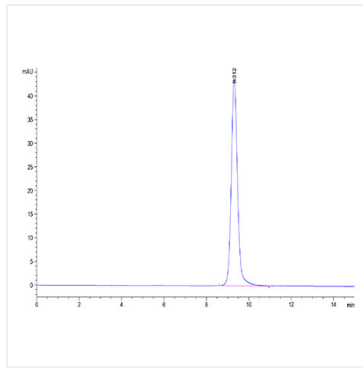
After reconstitution, the protein solution is stable at -20°C for 3 months, at 2-8°C for up to 1 week.

Avoid repeated freeze/thaw cycles.

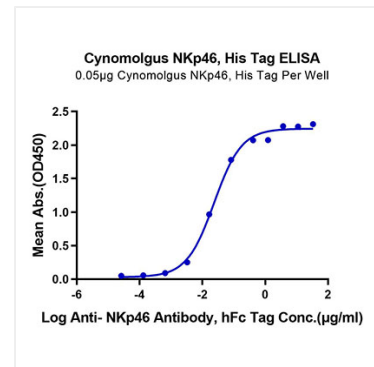
## Validation Data



Cynomolgus NKp46 on Tris-Bis PAGE under reduced condition. The purity is greater than 95%.



The purity of Cynomolgus NKp46 is greater than 95% as determined by SEC-HPLC.



Immobilized Cynomolgus NKp46, His Tag at 0.5µg/ml (100µl/Well) on the plate. Dose response curve for Anti-NKp46 Antibody, hFc Tag with the EC<sub>50</sub> of 23.5ng/ml determined by ELISA.