

Recombinant Cynomolgus Glypican-3/GPC3 Protein

Catalog No.: RP02648 **Recombinant**

Sequence Information

Species	Gene ID	Swiss Prot
Cynomolgus	102137748	XP_005594665.1

Tags

C-His

Synonyms

GPC3; DGSX; Glypican 3; GTR2-2; MXR7; OCI5; OCI-5; SGB; SGBS; SGBS1SDYS; SDYS; SGBS1

Product Information

Source	Purification
HEK293 cells	> 95% as determined by Tris-Bis PAGE > 95% as determined by HPLC

Endotoxin

Less than 1EU per µg by the LAL method.

Formulation

Reconstitution

Centrifuge the tube before opening. Reconstitute to a concentration of 0.1-0.5 mg/mL in sterile distilled water. Avoid vortex or vigorously pipetting the protein. For long term storage, it is recommended to add a carrier protein or stabilizer (e.g. 0.1% BSA, 5% HSA, 10% FBS or 5% Trehalose), and aliquot the reconstituted protein solution to minimize freeze-thaw cycles.

Contact

 | 400-999-6126

 | cn.market@abclonal.com.cn

 | www.abclonal.com.cn

Background

Glypican-3 is a protein, which is encoded by the GPC3 gene in humans. The protein core of GPC3 consists of two subunits, where the N-terminal subunit has a size of ~40 kDa and the C-terminal subunit is ~30 kDa. Glypican 3 is a potential therapeutic target for treating liver cancer and other cancers. Several therapeutic anti-GPC3 antibodies have been developed.

Basic Information

Description

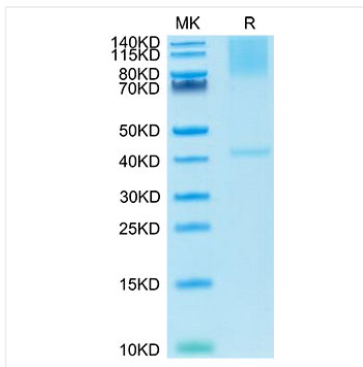
Recombinant Cynomolgus Glypican-3/GPC3 Protein is produced by HEK293 cells expression system. The target protein is expressed with sequence (Gln25-His559) of cynomolgus Glypican-3/GPC3 (Accession #XP_005594665.1) fused with His tag at the C-terminus.

Bio-Activity

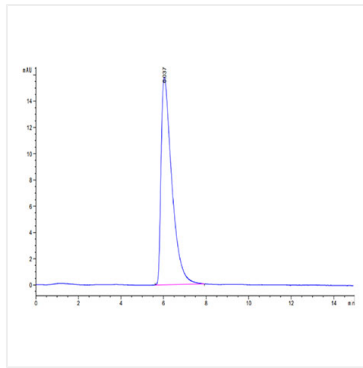
Storage

Store at -20°C. Store the lyophilized protein at -20°C to -80°C up to 1 year from the date of receipt. After reconstitution, the protein solution is stable at -20°C for 3 months, at 2-8°C for up to 1 week. Avoid repeated freeze/thaw cycles.

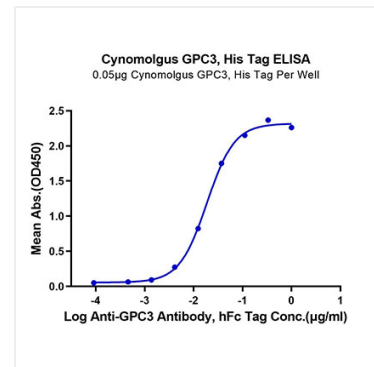
Validation Data



Cynomolgus GPC3 on Tris-Bis PAGE under reduced condition. The purity is greater than 95%.



The purity of Cynomolgus GPC3 is greater than 95% as determined by SEC-HPLC.



Immobilized Cynomolgus GPC3, His Tag at 0.5µg/ml (100µl/well) on the plate. Dose response curve for Anti-GPC3 Antibody, hFc Tag with the EC₅₀ of 18.7ng/ml determined by ELISA.