

Recombinant Human IL-15RA&IL-15 Protein

Catalog No.: RP02654 **Recombinant**

Sequence Information

Species	Gene ID	Swiss Prot
Human	3601&3600	Q13261-1(IL-15RA)&P40933-1(IL-15)

Tags

C-His

Synonyms

IL-15 R
alpha[CD215][IL15RA][IL-15RA][IL-15R-alpha1][Interleukin-15][IL-15][IL15

Product Information

Source	Purification
HEK293 cells	> 95% as determined by Tris-Bis PAGE > 95% as determined by HPLC

Endotoxin

Less than 1EU per µg by the LAL method.

Formulation

Reconstitution

Centrifuge the tube before opening. Reconstitute to a concentration of 0.1-0.5 mg/mL in sterile distilled water. Avoid vortex or vigorously pipetting the protein. For long term storage, it is recommended to add a carrier protein or stabilizer (e.g. 0.1% BSA, 5% HSA, 10% FBS or 5% Trehalose), and aliquot the reconstituted protein solution to minimize free-thaw cycles.

Contact

☎ | 400-999-6126

✉ | cn.market@abclonal.com.cn

🌐 | www.abclonal.com.cn

Background

Interleukin-15 receptor alpha (IL-15R alpha) is a high affinity IL-15 binding protein that is crucial for mediating IL-15 functions such as memory CD8 T cell proliferation and NK, NK/T cell, and intestinal intraepithelial lymphocyte development.

Basic Information

Description

Recombinant Human IL-15RA&IL-15 Protein is expressed from Expi293 with His tag at the C-terminal. It contains Ile31-Ser108(IL-15RA)&Asn49-Ser162(IL-15).

Bio-Activity

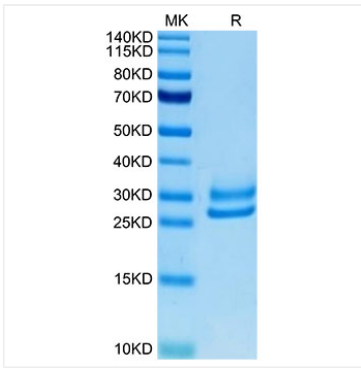
Storage

Store at -20°C. Store the lyophilized protein at -20°C to -80 °C up to 1 year from the date of receipt.

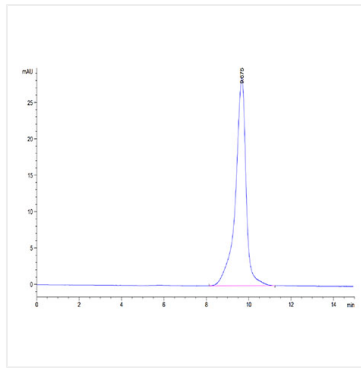
After reconstitution, the protein solution is stable at -20°C for 3 months, at 2-8°C for up to 1 week.

Avoid repeated freeze/thaw cycles.

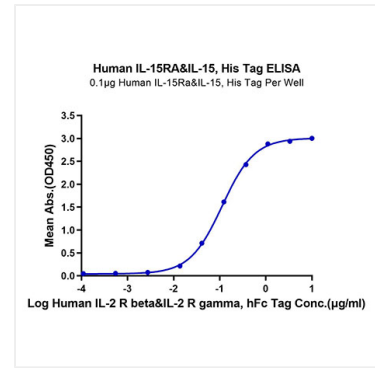
Validation Data



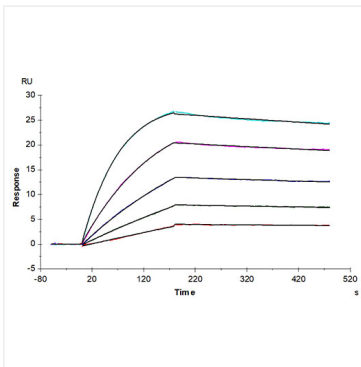
Human IL-15RA&IL-15 on Tris-Bis PAGE under reduced condition. The purity is greater than 95%.



The purity of Human IL-15RA&IL-15 is greater than 95% as determined by SEC-HPLC.



Immobilized Human IL-15RA&IL-15, His Tag at 1µg/ml (100µl/well) on the plate. Dose response curve for Human IL-2 R beta&IL-2 R gamma, hFc Tag with the EC₅₀ of 0.11µg/ml determined by ELISA.



Human IL-2 R beta&IL-2 R gamma, hFc Tag captured on CM5 Chip via Protein A can bind Human IL-15Ra&L-15, His Tag with an affinity constant of 0.084 nM as determined in SPR assay (Biacore T200).