

# Recombinant Human CRTAM/CD355 (A65V) Protein

Catalog No.: RP02670 **Recombinant**

## Sequence Information

| Species | Gene ID | Swiss Prot |
|---------|---------|------------|
| Human   | 56253   | O95727-1   |

### Tags

C-His

### Synonyms

CD355 antigen; CD355; CRTAM

## Product Information

| Source       | Purification       |
|--------------|--------------------|
| HEK293 cells | > 95% by SDS-PAGE. |

### Endotoxin

<0.01EU/μg by the LAL method.

### Formulation

### Reconstitution

Centrifuge the tube before opening.  
Reconstitute to a concentration of 0.1-0.5 mg/mL in sterile distilled water. Avoid vortex or vigorously pipetting the protein. For long term storage, it is recommended to add a carrier protein or stabilizer (e.g. 0.1% BSA, 5% HSA, 10% FBS or 5% Trehalose), and aliquot the reconstituted protein solution to minimize free-thaw cycles.

## Contact

 | 400-999-6126

 | [cn.market@abclonal.com.cn](mailto:cn.market@abclonal.com.cn)

 | [www.abclonal.com.cn](http://www.abclonal.com.cn)

## Background

Class-I Restricted T Cell-Associated Molecule (CRTAM) is a protein that is expressed after T cell activation. The interaction of CRTAM with its ligand, nectin-like 2 (Nectin2), is required for the efficient production of IL-17, IL-22, and IFN $\gamma$  by murine CD4 T cells, and it plays a role in optimal CD8 T and NK cell cytotoxicity. CRTAM promotes the pro-inflammatory cytokine profile; therefore, it may take part in the immunopathology of autoimmune diseases such as diabetes type 1 or colitis.

## Basic Information

### Description

Recombinant Human CRTAM Protein is expressed from HEK293 cells with a His tag at the C-terminal. It contains Ser18-Gly287.

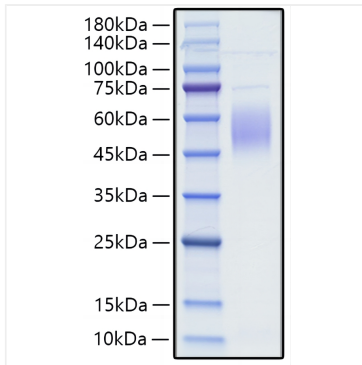
### Bio-Activity

### Storage

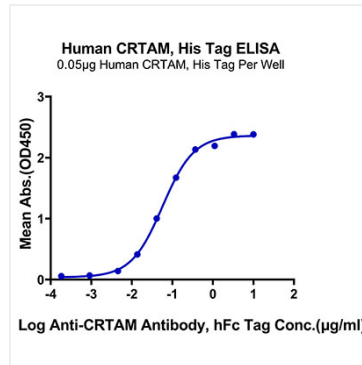
Store the lyophilized protein at -20°C to -80°C for long term.  
After reconstitution, the protein solution is stable at -20°C for 3 months, at 2-8°C for up to 1 week.  
Avoid repeated freeze/thaw cycles.

## Validation Data

---



Recombinant Human CRTAM Protein was determined by SDS-PAGE with Coomassie Blue, showing a band at 45-65 kDa.



Immobilized Human CRTAM, His Tag at 0.5µg/ml (100µl/Well) on the plate. Dose response curve for Anti-CRTAM Antibody, hFc Tag with the EC<sub>50</sub> of 57.3ng/ml determined by ELISA.