

Recombinant Human GP100 (HLA-A*02:01) Complex Protein

Catalog No.: RP02686 **Recombinant**

Sequence Information

Species	Gene ID	Swiss Prot
Human		A0A140T913(HLA-A*02:01)&P61769(B2M)&YLEPGPVTA

Tags

C-His&Avi

Synonyms

HLA0201; MHC I; gp100; Glycoprotein 100; ME20-M; P100

Product Information

Source	Purification
HEK293 cells	> 95% as determined by Tris-Bis PAGE > 95% as determined by HPLC

Endotoxin

Less than 1EU per µg by the LAL method.

Formulation

Reconstitution

Centrifuge the tube before opening. Reconstitute to a concentration of 0.1-0.5 mg/mL in sterile distilled water. Avoid vortex or vigorously pipetting the protein. For long term storage, it is recommended to add a carrier protein or stabilizer (e.g. 0.1% BSA, 5% HSA, 10% FBS or 5% Trehalose), and aliquot the reconstituted protein solution to minimize free-thaw cycles.

Contact

☎ | 400-999-6126

✉ | cn.market@abclonal.com.cn

🌐 | www.abclonal.com.cn

Background

Glycoprotein 100, gp100 or Melanocyte protein PMEL is 661 amino acids long and is a type I transmembrane glycoprotein enriched in melanosomes, which are the melanin-producing organelles in melanocytes. This protein is involved in melanosome maturation. The Human HLA-A*0201 gp100 (YLEPGPVTA) complex Protein is a complex of HLA-A*0201 of the MHC Class I, B2M and YLEPGPVTA peptide of the gp100.

Basic Information

Description

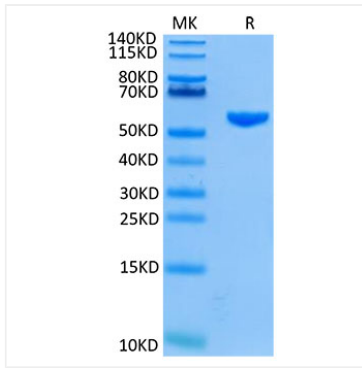
Recombinant Human GP100 (HLA-A*02:01) Complex Protein is expressed from Expi293 with His tag and Avi tag at the C-terminal. It contains Gly25-Thr305(HLA-A*02:01),Ile21-Met119(B2M) and YLEPGPVTA peptide.

Bio-Activity

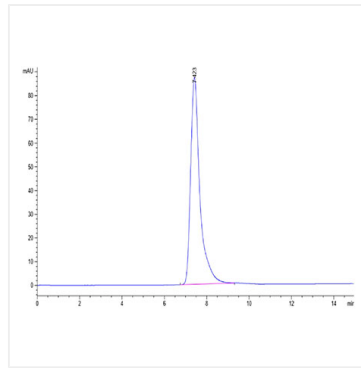
Storage

Store the lyophilized protein at -20°C to -80°C for long term. After reconstitution, the protein solution is stable at -20°C for 3 months, at 2-8°C for up to 1 week. Avoid repeated freeze/thaw cycles.

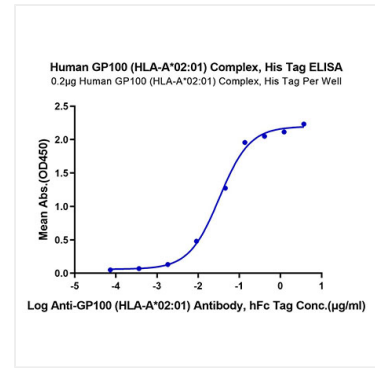
Validation Data



Human GP100 (HLA-A



02:01) on Tris-Bis PAGE under reduced condition. The purity is greater than 95%.



The purity of Human GP100 (HLA-A