

Recombinant Cynomolgus IgE Protein

Catalog No.: RP02689 **Recombinant**

Sequence Information

Species	Gene ID	Swiss Prot
Cynomolgus		G8F4W7

Tags

C-His&Avi

Synonyms

Ig epsilon chain C region [IgE]

Product Information

Source	Purification
HEK293 cells	> 95% as determined by Tris-Bis PAGE > 95% as determined by HPLC

Endotoxin

Less than 1EU per µg by the LAL method.

Formulation

Reconstitution

Centrifuge the tube before opening. Reconstitute to a concentration of 0.1-0.5 mg/mL in sterile distilled water. Avoid vortex or vigorously pipetting the protein. For long term storage, it is recommended to add a carrier protein or stabilizer (e.g. 0.1% BSA, 5% HSA, 10% FBS or 5% Trehalose), and aliquot the reconstituted protein solution to minimize freeze-thaw cycles.

Contact

 | 400-999-6126

 | cn.market@abclonal.com.cn

 | www.abclonal.com.cn

Background

Immunoglobulin E (IgE) is well known for its role in allergic disease, the manifestations of which are mediated through its two Fc receptors, FcεRI and CD23 (FcεRII). IgE and its interactions with these receptors are therefore potential targets for therapeutic intervention, and exciting progress has been made in this direction. Furthermore, recent structural studies of IgE-Fc, the two receptors, and of their complexes, have revealed a remarkable degree of plasticity at the IgE-CD23 interface and an even more remarkable degree of dynamic flexibility within the IgE molecule.

Basic Information

Description

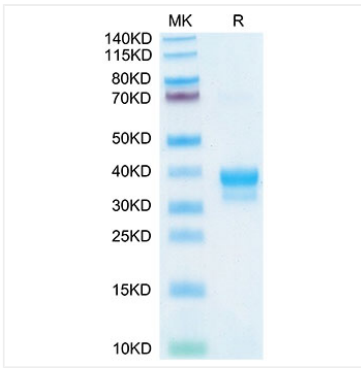
Recombinant Cynomolgus IgE Protein is expressed from Expi293 with His tag and Avi tag at the C-terminal. It contains Cys208-Lys429.

Bio-Activity

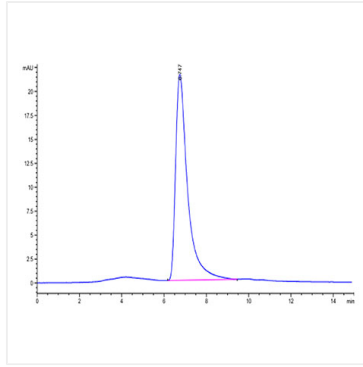
Storage

Store the lyophilized protein at -20°C to -80°C for long term. After reconstitution, the protein solution is stable at -20°C for 3 months, at 2-8°C for up to 1 week. Avoid repeated freeze/thaw cycles.

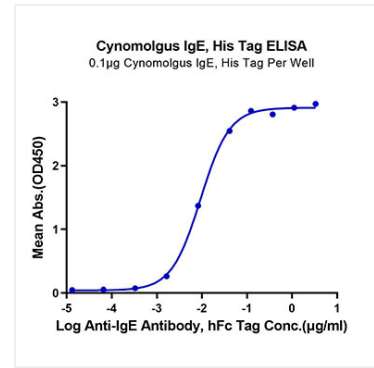
Validation Data



Cynomolgus IgE on Tris-Bis PAGE under reduced condition. The purity is greater than 95%.



The purity of Cynomolgus IgE is greater than 95% as determined by SEC-HPLC.



Immobilized Cynomolgus IgE, His Tag at 1µg/ml (100µl/well) on the plate. Dose response curve for Anti-IgE Antibody, hFc Tag with the EC₅₀ of 9.3ng/ml determined by ELISA.