

Recombinant Rhesus macaque HLA-G Complex Tetramer Protein

Catalog No.: RP02691 **Recombinant**

Sequence Information

Species	Gene ID	Swiss Prot
Rhesus macaque	100187576□ 712428	O02948(HLA-G)&Q6V7J5(B2M)&RIIPRHLQL

Tags

C-His&Avi

Synonyms

HLA G antigen; sHLA-G; b2 microglobulin; HLA G; HLAG; HLA-G; MHC Class I Antigen G; MHC class Ib antigen; MHC-G; sHLA-G

Product Information

Source	Purification
HEK293 cells	> 95% as determined by Tris-Bis PAGE□> 95% as determined by HPLC

Calculated MW	Observed MW
258 kDa	260-265 kDa

Endotoxin

Less than 1EU per µg by the LAL method.

Formulation

Reconstitution

Centrifuge the tube before opening. Reconstitute to a concentration of 0.1-0.5 mg/mL in sterile distilled water. Avoid vortex or vigorously pipetting the protein. For long term storage, it is recommended to add a carrier protein or stabilizer (e.g. 0.1% BSA, 5% HSA, 10% FBS or 5% Trehalose), and aliquot the reconstituted protein solution to minimize free-thaw cycles.

Contact

☎ | 400-999-6126

✉ | cn.market@abclonal.com.cn

🌐 | www.abclonal.com.cn

Background

HLA-G is a molecule that was first known to confer protection to the fetus from destruction by the immune system of its mother, thus critically contributing to fetal-maternal tolerance. The first functional finding constituted the basis for HLA-G research and can be summarized as such: HLA-G, membrane-bound or soluble, strongly binds its inhibitory receptors on immune cells (NK, T, B, monocytes/dendritic cells), inhibits the functions of these effectors, and so induces immune inhibition.

Basic Information

Description

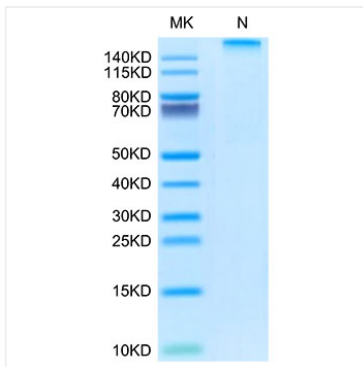
Recombinant Rhesus macaque HLA-G complex Tetramer Protein is expressed from Expi293 with His tag and Avi tag at the C-terminal, tetramer is assembled by biotinylated monomer and streptavidin.□It contains Gly25-Thr305(HLA-G),Ile21-Met119(B2M) and RIIPRHLQL peptide.

Bio-Activity

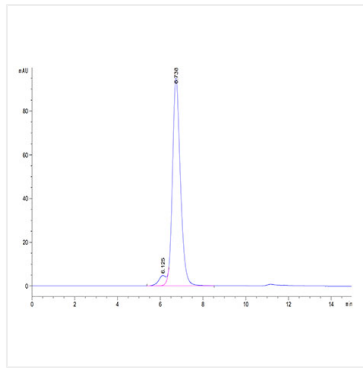
Storage

Store at -20°C. Store the lyophilized protein at -20°C to -80 °C up to 1 year from the date of receipt. After reconstitution, the protein solution is stable at -20°C for 3 months, at 2-8°C for up to 1 week. Avoid repeated freeze/thaw cycles.

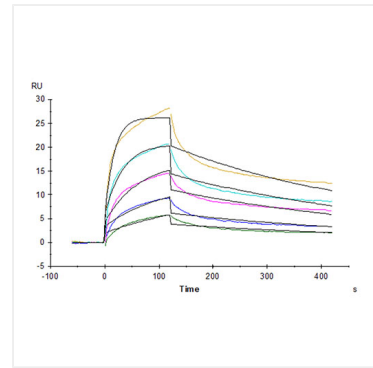
Validation Data



Rhesus macaque HLA-G Tetramer on Tris-Bis PAGE under Non reducing (N) condition. The purity is greater than 95%.



The purity of Rhesus macaque HLA-G Tetramer is greater than 95% as determined by SEC-HPLC.



Rhesus macaque LILRB1, hFc Tag captured on CM5 Chip via Protein A can bind Rhesus macaque HLA-G Tetramer, His Tag with an affinity constant of 1.74 nM as determined in SPR assay (Biacore T200).