

Recombinant Human AFP (HLA-A*02:01) Complex Protein

Catalog No.: RP02693 **Recombinant**

Sequence Information

Species	Gene ID	Swiss Prot
Human		A0A140T913(HLA-A*02:01)&P61769(B2M)&PLFQVPEPV

Tags

C-His&Avi

Synonyms

Alpha-fetoprotein; Alpha-1-fetoprotein; Alpha-feto; AFP; HPAFP; AFPD; FETA; MHC

Product Information

Source	Purification
HEK293 cells	> 95% as determined by Tris-Bis PAGE > 95% as determined by HPLC

Endotoxin

Less than 1EU per µg by the LAL method.

Formulation

Reconstitution

Centrifuge the tube before opening. Reconstitute to a concentration of 0.1-0.5 mg/mL in sterile distilled water. Avoid vortex or vigorously pipetting the protein. For long term storage, it is recommended to add a carrier protein or stabilizer (e.g. 0.1% BSA, 5% HSA, 10% FBS or 5% Trehalose), and aliquot the reconstituted protein solution to minimize free-thaw cycles.

Contact

 | 400-999-6126

 | cn.market@abclonal.com.cn

 | www.abclonal.com.cn

Background

Alpha-fetoprotein (AFP), a specific liver cancer marker, T cells expressing AFP-CAR selectively degranulated, released cytokines, and lysed liver cancer cells that were HLA-A*02:01 /AFP while sparing cells from multiple tissue types that were negative for either expressed proteins. CAR T-cell immunotherapy targeting intracellular/secreted solid tumor antigens can elicit a potent antitumor response.

Basic Information

Description

Recombinant Human AFP (HLA-A*02:01) Complex Protein is expressed from Expi293 with His tag and Avi tag at the C-terminal. It contains Gly25-Thr305(HLA-A*02:01),Ile21-Met119(B2M) and PLFQVPEPV peptide.

Bio-Activity

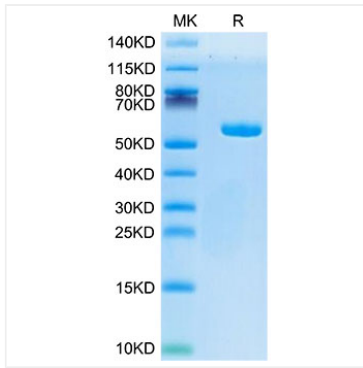
Storage

Store the lyophilized protein at -20°C to -80°C for long term.

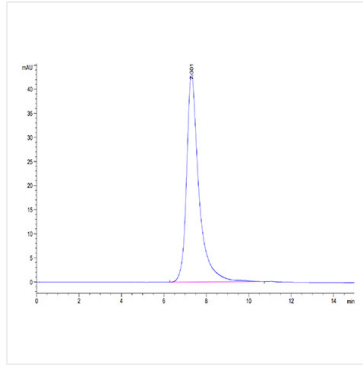
After reconstitution, the protein solution is stable at -20°C for 3 months, at 2-8°C for up to 1 week.

Avoid repeated freeze/thaw cycles.

Validation Data



Human AFP (HLA-A*02:01) on Tris-Bis PAGE under reduced condition. The purity is greater than 95%.



The purity of Human AFP (HLA-A*02:01) is greater than 95% as determined by SEC-HPLC.