

Recombinant Human NY-ESO-1 (HLA-A*02:01) Protein

Catalog No.: RP02694 **Recombinant**

Sequence Information

Species	Gene ID	Swiss Prot
Human		A0A140T913(HLA-A*02:01)&P61769(B2M)&SLLMWITQV

Tags

C-His&Avi

Synonyms

MHC; MY-ESO-1; CT6.1; LAGE-2; CTAG1; CTAG1B; ESO1CTAG; LAGE2A; NY-ESO-1

Product Information

Source	Purification
HEK293 cells	> 95% as determined by Tris-Bis PAGE > 95% as determined by HPLC

Calculated MW	Observed MW
50.5 kDa	55-60 kDa

Endotoxin

Less than 1EU per µg by the LAL method.

Formulation

Reconstitution

Centrifuge the tube before opening. Reconstitute to a concentration of 0.1-0.5 mg/mL in sterile distilled water. Avoid vortex or vigorously pipetting the protein. For long term storage, it is recommended to add a carrier protein or stabilizer (e.g. 0.1% BSA, 5% HSA, 10% FBS or 5% Trehalose), and aliquot the reconstituted protein solution to minimize free-thaw cycles.

Contact

☎ | 400-999-6126

✉ | cn.market@abclonal.com.cn

🌐 | www.abclonal.com.cn

Background

NY-ESO-1 or New York esophageal squamous cell carcinoma 1 is a well-known cancer-testis antigen (CTAs) with re-expression in numerous cancer types. Its ability to elicit spontaneous humoral and cellular immune responses, together with its restricted expression pattern, have rendered it a good candidate target for cancer immunotherapy.

Basic Information

Description

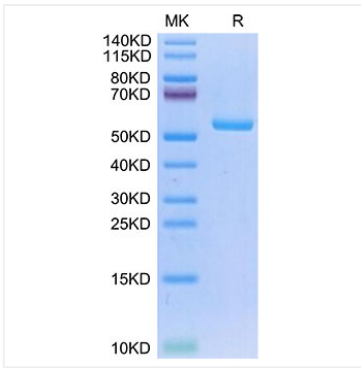
Recombinant Human NY-ESO-1 (HLA-A*02:01) Protein is expressed from Expi293 with His tag and Avi tag at the C-terminal. It contains Gly25-Thr305(HLA-A*02:01), Ile21-Met119(B2M) and SLLMWITQV peptide.

Bio-Activity

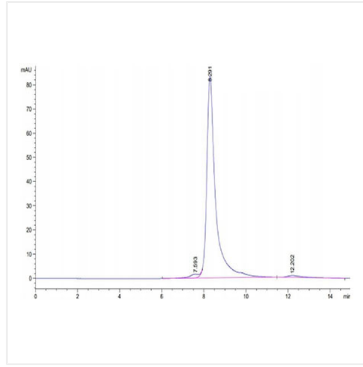
Storage

Store at -20°C. Store the lyophilized protein at -20°C to -80 °C up to 1 year from the date of receipt. After reconstitution, the protein solution is stable at -20°C for 3 months, at 2-8°C for up to 1 week. Avoid repeated freeze/thaw cycles.

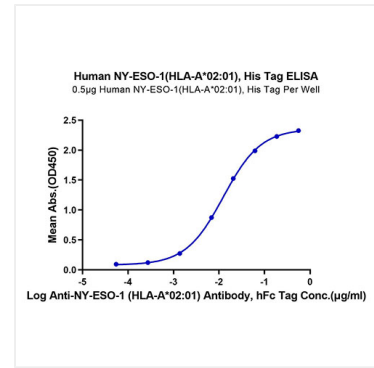
Validation Data



Human NY-ESO-1 (HLA-A*02:01) on Tris-Bis PAGE under reduced condition. The purity is greater than 95%.



The purity of Human NY-ESO-1 (HLA-A*02:01) is greater than 95% as determined by SEC-HPLC.



Immobilized Human NY-ESO-1 (HLA-A*02:01) , His Tag at 5µg/ml (100µl/well) on the plate. Dose response curve for Anti-NY-ESO-1 (HLA-A*02:01) Antibody, hFc Tag with the EC₅₀ of 12.4ng/ml determined by ELISA.