

Recombinant Cynomolgus CLEC12A/MICL/CLL-1 Protein

Catalog No.: RP02726 **Recombinant**

Sequence Information

Species	Gene ID	Swiss Prot
Cynomolgus		A0A2K5WXQ 6-1

Tags

N-His

Synonyms

MICL; CLL-1; CLEC12A; CLL1; DCAL2;
DCAL-2; CD371; CD303; CLECSF11;
CLECSF7; DLEC; HECL; PRO34150;
DCAL-2

Product Information

Source	Purification
HEK293 cells	> 95% as determined by Tris- Bis PAGE > 95% as determined by HPLC

Endotoxin

Less than 1EU per µg by the LAL method.

Formulation

Reconstitution

Centrifuge the tube before opening.
Reconstitute to a concentration of
0.1-0.5 mg/mL in sterile distilled water.
Avoid vortex or vigorously pipetting the
protein. For long term storage, it is
recommended to add a carrier protein or
stabilizer (e.g. 0.1% BSA, 5% HSA, 10%
FBS or 5% Trehalose), and aliquot the
reconstituted protein solution to
minimize free-thaw cycles.

Contact

 | 400-999-6126

 | cn.market@abclonal.com.cn

 | www.abclonal.com.cn

Background

CLEC12A has recently been identified as an antigen, expressed on leukemic stem cells and leukemic blasts. Given the fact that this expression profile seems stable throughout diagnosis, treatment and relapse on leukemic blasts and leukemic stem cells, CLEC12A can be considered a highly potent and reliable marker for the detection of measurable residual disease and therefore applicable for risk stratification and prognostication in AML.

Basic Information

Description

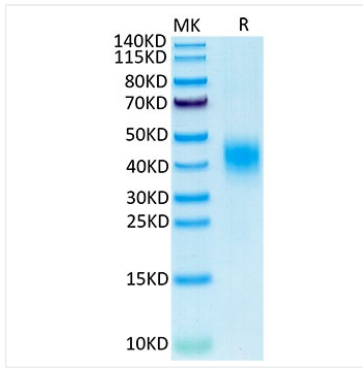
Recombinant Cynomolgus CLEC12A/MICL/CLL-1 Protein is expressed from Expi293 with His tag at the N-terminal. It contains His65-Ala265.

Bio-Activity

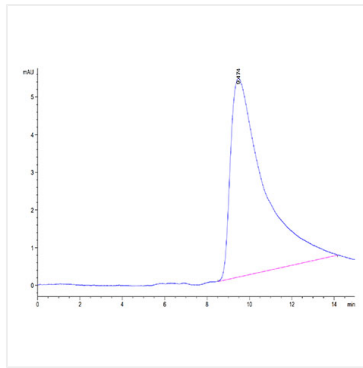
Storage

Store the lyophilized protein at -20°C to -80°C for long term.
After reconstitution, the protein solution is stable at -20°C for 3 months, at 2-8°C for up to 1 week.
Avoid repeated freeze/thaw cycles.

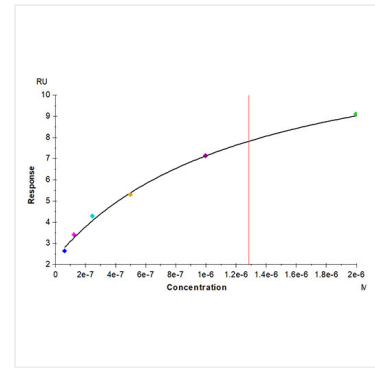
Validation Data



Cynomolgus CLEC12A on Tris-Bis PAGE under reduced condition. The purity is greater than 95%.



The purity of Cynomolgus CLEC12A is greater than 95% as determined by SEC-HPLC.



Anti-CLEC12A Antibody captured on CM5 Chip via Protein A can bind Cynomolgus CLEC12A, His Tag with an affinity constant of 1.28 μM as determined in SPR assay (Biacore T200).