

Catalog No.: RP02742 **Recombinant**

| Species | Gene ID | Swiss Prot |
|---------|---------|------------|
| Human | 5169 | Q14638 |

N-His&Avi

E-NPP 3; NPP3; PD-Ibeta; NPPase; ENPP3;
PDNP3; CD203c; B10; gp130RB13-6

| | |
|-------------------------------|--|
| Source HEK293 cells | Purification ≥ 95 % as determined by Tris- Bis PAGE; ≥ 95 % as determined by HPLC. |
|-------------------------------|--|


17.21 kDa 18-20 kDa

< 1 EU/μg of the protein by LAL method.

Centrifuge the tube before opening. Reconstitute to a concentration of 0.1-0.5 mg/mL in sterile distilled water. Avoid vortex or vigorously pipetting the protein. For long term storage, it is recommended to add a carrier protein or stabilizer (e.g. 0.1% BSA, 5% HSA, 10% FBS or 5% Trehalose), and aliquot the reconstituted protein solution to minimize free-thaw cycles.

 | 400-999-6126

 | cn.market@abclonal.com.cn

 | www.abclonal.com.cn

Ectonucleotide pyrophosphatase-phosphodiesterase 3 (ENPP3), a protein detected in the human uterus, has been found to play an important role in the development and invasion of tumours. It was recently discovered that ENPP3 was upregulated during the window of implantation in the human endometrium but its functional relevance remains elusive.

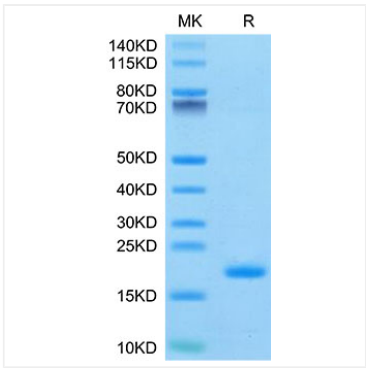
Recombinant Human ENPP-3(48-157) Protein is expressed from Expi293 with His tag and Avi tag at the N-terminal. It contains Leu48-Asp157.

Store at -20°C. Store the lyophilized protein at -20°C to -80 °C up to 1 year from the date of receipt.

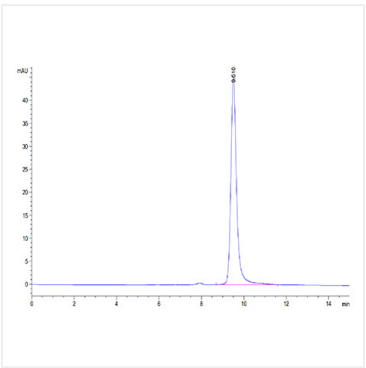
After reconstitution, the protein solution is stable at -20°C for 3 months, at 2-8°C for up to 1 week.

Avoid repeated freeze/thaw cycles.

Validation Data



Recombinant Human ENPP-3(48-157) Protein was determined by Tris-Bis PAGE under reducing conditions.



The purity of Human ENPP-3 (48-157) is greater than 95% as determined by SEC-HPLC.