

Biotinylated Recombinant Human NY-ESO-1 (HLA-A*02:01) Complex Protein

Catalog No.: RP02750 **Recombinant**

Sequence Information

Species	Gene ID	Swiss Prot
Human		A0A140T913(HLA-A*02:01)&P61769(B2M)&SLLMWITQC

Tags

C-His&Avi

Synonyms

MHC; MY-ESO-1; CT6.1; LAGE-2; CTAG1; CTAG1B; ESO1CTAG; LAGE2A; NY-ESO-1

Product Information

Source	Purification
HEK293 cells	> 95% as determined by Tris-Bis PAGE > 95% as determined by HPLC

Endotoxin

Less than 1EU per µg by the LAL method.

Formulation


Reconstitution

Centrifuge the tube before opening. Reconstitute to a concentration of 0.1-0.5 mg/mL in sterile distilled water. Avoid vortex or vigorously pipetting the protein. For long term storage, it is recommended to add a carrier protein or stabilizer (e.g. 0.1% BSA, 5% HSA, 10% FBS or 5% Trehalose), and aliquot the reconstituted protein solution to minimize free-thaw cycles.

Contact

 | 400-999-6126

 | cn.market@abclonal.com.cn

 | www.abclonal.com.cn

Background

NY-ESO-1 or New York esophageal squamous cell carcinoma 1 is a well-known cancer-testis antigen (CTAs) with re-expression in numerous cancer types. Its ability to elicit spontaneous humoral and cellular immune responses, together with its restricted expression pattern, have rendered it a good candidate target for cancer immunotherapy.

Basic Information

Description

Recombinant Biotinylated Human NY-ESO-1 (HLA-A*02:01) Complex Protein is expressed from Expi293 with His tag and Avi tag at the C-terminal. It contains Gly25-Thr305(HLA-A*02:01),Ile21-Met119(B2M) and SLLMWITQC peptide.

Bio-Activity

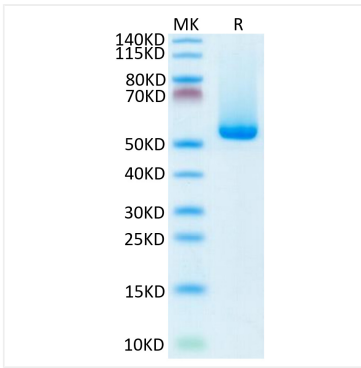
Storage

Store the lyophilized protein at -20°C to -80°C for long term.

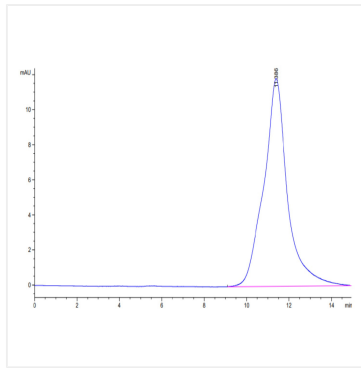
After reconstitution, the protein solution is stable at -20°C for 3 months, at 2-8°C for up to 1 week.

Avoid repeated freeze/thaw cycles.

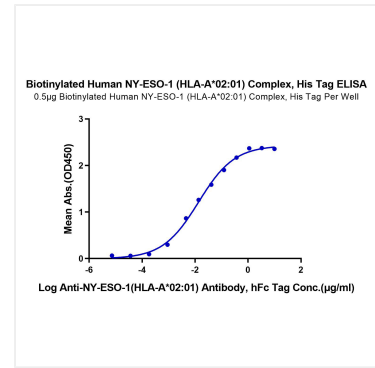
Validation Data



Biotinylated Human NY-ESO-1 (HLA-A



02:01) Complex on Tris-Bis PAGE under reduced condition. The purity is greater than 95%.



The purity of Biotinylated Human NY-ESO-1 (HLA-A