

Biotinylated Recombinant Human CTGF/CCN2 Protein

Catalog No.: RP02759B **Recombinant**

Sequence Information

Species	Gene ID	Swiss Prot
Human	1490	Q5M8T4-1

Tags

C-His&Avi

Synonyms

IGFBP8; IBP-8; CCN2; NOV2; HCS24; CTGF; CTGRP; Fisp12; MGC102839

Product Information

Source	Purification
HEK293 cells	> 95% by Tris-Bis PAGE

Calculated MW **Observed MW**

Endotoxin

< 1 EU/μg of the protein by LAL method.

Formulation

Lyophilized from a 0.22 μm filtered solution of PBS, 200 mM L-arginine, pH 7.4.

Reconstitution

Centrifuge the tube before opening. Reconstitute to a concentration of 0.1-0.5 mg/mL in sterile distilled water. Avoid vortex or vigorously pipetting the protein. For long term storage, it is recommended to add a carrier protein or stabilizer (e.g. 0.1% BSA, 5% HSA, 10% FBS or 5% Trehalose), and aliquot the reconstituted protein solution to minimize free-thaw cycles.

Contact

☎ | 400-999-6126

✉ | cn.market@abclonal.com.cn

🌐 | www.abclonal.com.cn

Background

Connective tissue growth factor (CTGF) is a member of the CCN matricellular protein family, consisting of four domains, that regulates the signaling of other growth factors and promotes kidney fibrosis. CTGF can simultaneously interact with several factors with its four domains. The microenvironment differs depending on the types of cells and tissues and differentiation stages of these cells.

Basic Information

Description

Biotinylated Recombinant Human CTGF/CCN2 Protein is produced by Expi293 expression system. The target protein is expressed with sequence (Gln27-Ala349) of Human CTGF/CCN2 fused with a His and Avi tag at the C-terminal.

Bio-Activity

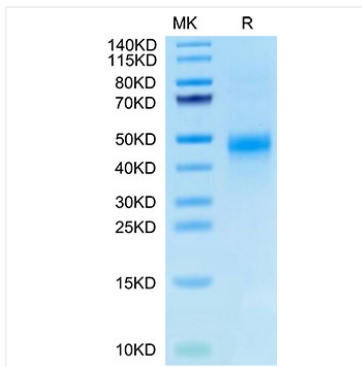
Storage

Store at -20°C. Store the lyophilized protein at -20°C to -80°C up to 1 year from the date of receipt.

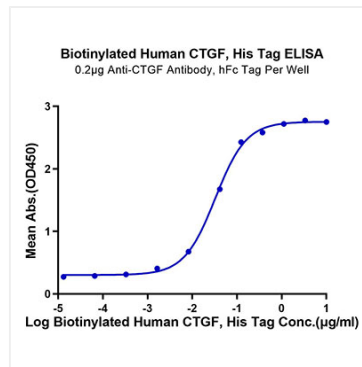
After reconstitution, the protein solution is stable at -20°C for 3 months, at 2-8°C for up to 1 week.

Avoid repeated freeze/thaw cycles.

Validation Data



Biotinylated Human CTGF on Tris-Bis PAGE under reduced condition. The purity is greater than 95%.



Immobilized Anti-CTGF Antibody at $2\mu\text{g/ml}$ ($100\mu\text{l/well}$) on the plate. Dose response curve for Biotinylated Human CTGF, His Tag with the EC₅₀ of 32.6ng/ml determined by ELISA.