

Recombinant Human Thrombopoietin R/MPL Protein

Catalog No.: RP02785 **Recombinant**

Sequence Information

Species	Gene ID	Swiss Prot
Human	4352	P40238

Tags

C-His

Synonyms

TPO-R; CD110; MPL; c-Mpl; MPLV; K12

Product Information

Source	Purification
HEK293 cells	> 95% as determined by HPLC

Endotoxin

<1EU/μg

Formulation

Lyophilized from a 0.22 μm filtered solution of PBS, pH 7.4.

Reconstitution

Centrifuge the tube before opening. Reconstitute to a concentration of 0.1-0.5 mg/mL in sterile distilled water. Avoid vortex or vigorously pipetting the protein. For long term storage, it is recommended to add a carrier protein or stabilizer (e.g. 0.1% BSA, 5% HSA, 10% FBS or 5% Trehalose), and aliquot the reconstituted protein solution to minimize free-thaw cycles.

Contact

 | 400-999-6126 | cn.market@abclonal.com.cn | www.abclonal.com.cn

Background

The c-mpl gene encodes a member of the hematopoietic cytokine receptor superfamily. This gene was discovered through the study of a murine retrovirus which induces an acute myeloproliferative syndrome in mice. MPLV (for myeloproliferative leukemia virus) has transduced a truncated and constitutively activated form of the c-mpl receptor chain. High levels of c-mpl expression were detected in 45% of acute myeloid leukemia (AML). No correlation was found between c-mpl expression and the French-American-British classification subtype of AML.

Basic Information

Description

Recombinant Human Thrombopoietin R/MPL Protein is produced by HEK293 cells expression system. The target protein is expressed with sequence (Gln26-Trp491) of human Thrombopoietin R/MPL (Accession #NP_005364.1) fused with a 6xHis tag at the C-terminus.

Bio-Activity

Immobilized Human c-MPL, His Tag at 0.2μg/ml (100μl/Well) on the plate. Dose response curve for Anti-c-MPL Antibody, hFc Tag with the EC₅₀ of 9.1ng/ml determined by ELISA.

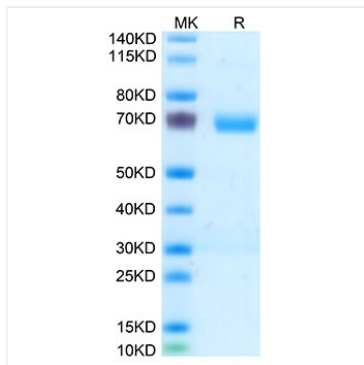
Storage

Store the lyophilized protein at -20°C to -80°C for 12 months.

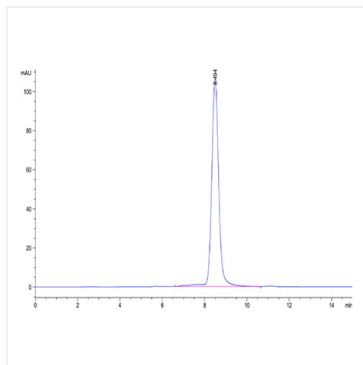
After reconstitution, the protein solution is stable at -20°C for 3 months, at 2-8°C for up to 1 week.

Avoid repeated freeze/thaw cycles.

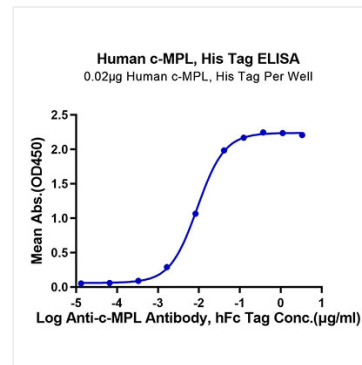
Validation Data



Recombinant Human Thrombopoietin R/MPL Protein was determined by SDS-PAGE with Coomassie Blue, showing bands at 68-70 kDa.



The purity of Human Thrombopoietin R/MPL is greater than 95% as determined by SEC-HPLC.



Immobilized Human c-MPL, His Tag at 0.2µg/ml (100µl/Well) on the plate. Dose response curve for Anti-c-MPL Antibody, hFc Tag with the EC_{50} of 9.1ng/ml determined by ELISA.