

Recombinant Human PC4/SUB1 Protein

Catalog No.: RP02787 **Recombinant**

Sequence Information

Species	Gene ID	Swiss Prot
Human	10923	P53999

Tags

No tag

Synonyms

P15; PC4; p14; RPO2TC1;SUB1

Product Information

Source	Purification
<i>E. coli</i>	> 90% by SDS-PAGE.

Calculated MW	Observed MW
16.2 kDa	19 kDa

Endotoxin

Please contact us for more information.


Formulation

Lyophilized from a 0.22 µm filtered solution of PBS, 10% glycerol, pH 7.4.

Reconstitution

Centrifuge the vial before opening. Reconstitute to a concentration of 0.1-0.5 mg/mL in sterile distilled water. Avoid vortex or vigorously pipetting the protein. For long term storage, it is recommended to add a carrier protein or stabilizer (e.g. 0.1% BSA, 5% HSA, 10% FBS or 5% Trehalose), and aliquot the reconstituted protein solution to minimize free-thaw cycles.

Contact

 | 400-999-6126 | cn.market@abclonal.com.cn | www.abclonal.com.cn

Background

SUB1 belongs to the transcriptional coactivator PC4 family. It is a general coactivator that functions cooperatively with TAFs and mediates functional interactions between upstream activators and the general transcriptional machinery. SUB1 binds single-stranded DNA. Single-stranded DNA-binding proteins play many roles in nucleic acid metabolism, but their importance during transcription remains unclear. SUB1 exhibits strong genetic interactions with factors necessary for promoter melting. It localizes near the transcription bubble in vitro and binds to promoters in vivo dependent upon preinitiation complexes assembly. SUB1 interacts with the nontemplate strand of RNAPII complexes during initiation. It may also be involved in stabilizing the multiprotein transcription complex.

Basic Information

Description

Recombinant Human PC4/SUB1 Protein is produced by *E. coli* expression system. The target protein is expressed with sequence (Met1-Leu127) of human PC4/SUB1 (Accession #NP_006704.3) fused with no additional amino acid.

Bio-Activity

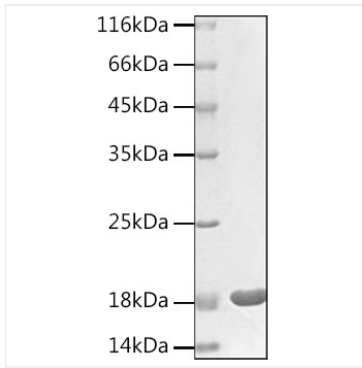
Storage

Store at -20°C. Store the lyophilized protein at -20°C to -80 °C up to 1 year from the date of receipt.

After reconstitution, the protein solution is stable at -20°C for 3 months, at 2-8°C for up to 1 week.

Avoid repeated freeze/thaw cycles.

Validation Data



Recombinant Human PC4/SUB1 Protein was determined by SDS-PAGE with Coomassie Blue, showing bands at 18 kDa.