

Recombinant Human AMBP Protein

Catalog No.: RP02794 **Recombinant**

Sequence Information

Species	Gene ID	Swiss Prot
Human	259	P02760

Tags

C-His

Synonyms

A1M; HCP; ITI; UTI; EDC1; HI30; ITIL;
IATIL; ITILC; AMBP

Product Information

Source	Purification
HEK293 cells	> 95% by SDS-PAGE.

Endotoxin

<1EU/ μ g

Formulation

Lyophilized from a 0.22 μ m filtered solution of PBS, pH 7.4.

Reconstitution

Centrifuge the tube before opening. Reconstitute to a concentration of 0.1-0.5 mg/mL in sterile distilled water. Avoid vortex or vigorously pipetting the protein. For long term storage, it is recommended to add a carrier protein or stabilizer (e.g. 0.1% BSA, 5% HSA, 10% FBS or 5% Trehalose), and aliquot the reconstituted protein solution to minimize free-thaw cycles.

Contact

 | 400-999-6126 | cn.market@abclonal.com.cn | www.abclonal.com.cn

Background

Protein AMBP belongs to the calycin superfamily and Lipocalin family. AMBP can be cleaved into three chains: α -1-microglobulin, inter- α -trypsin inhibitor light chain and trypstatin. AMBP is expressed by the liver and secreted in plasma. α -1-microglobulin occurs in many physiological fluids including the plasma, urine, and cerebrospinal fluid. Inter- α -trypsin inhibitor is present in the plasma and urine. α -1-microglobulin occurs as a monomer and also in complexes with IgA and albumin, Inter- α -trypsin inhibitor inhibits trypsin, plasmin and lysosomal granulocytic elastase. Trypstatin act as a trypsin inhibitor, exists in a monomer forms and also occurs as a complex with trypase in mast cells.

Basic Information

Description

Recombinant Human AMBP Protein is produced by HEK293 cells expression system. The target protein is expressed with sequence (Gly20-Val203) of human AMBP (Accession #NP_001624.1) fused with a 6 \times His tag at the C-terminus.

Bio-Activity

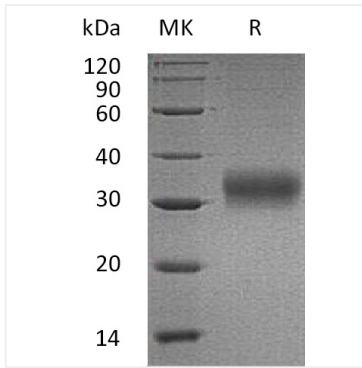
Storage

Store the lyophilized protein at -20°C to -80°C for 12 months.

After reconstitution, the protein solution is stable at -20°C for 3 months, at 2-8°C for up to 1 week.

Avoid repeated freeze/thaw cycles.

Validation Data



Recombinant Human AMBP Protein was determined by SDS-PAGE with Coomassie Blue, showing a band at 30-40 kD.