

**Catalog No.: RP02802** **Recombinant**

Species	Gene ID	Swiss Prot
Human	3080	P36980

## C-His

Complement Factor H-Related Protein 2;  
FHR-2; DDESK59; H Factor-Like 3; H  
Factor-Like Protein 2; CFHR2; CFHL2;  
FHR2; HFL3

<b>Source</b>	<b>Purification</b>
HEK293 cells	≥ 95 % as determined by SDS-PAGE

## 29.78 kDa                      31.35 kDa

< 1 EU/μg of the protein by LAL method.

Lyophilized from a 0.22  $\mu\text{m}$  filtered solution of 20mM PB, 200mM NaCl, 2mM EDTA, pH 7.4.

Centrifuge the tube before opening. Reconstitute to a concentration of 0.1-0.5 mg/mL in sterile distilled water. Avoid vortex or vigorously pipetting the protein. For long term storage, it is recommended to add a carrier protein or stabilizer (e.g. 0.1% BSA, 5% HSA, 10% FBS or 5% Trehalose), and aliquot the reconstituted protein solution to minimize free-thaw cycles.

 | 400-999-6126

 | [cn.market@abclonal.com.cn](mailto:cn.market@abclonal.com.cn)

 | [www.abclonal.com.cn](http://www.abclonal.com.cn)

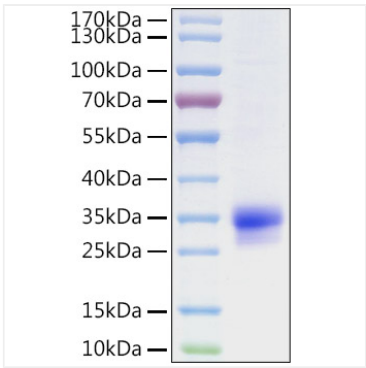
Complement Factor H-Related Protein 2 (CFHR2) is a secreted protein that belongs to the complement factor H protein family. Members of the H-related protein family are exclusively composed of individually folded protein domains, termed short consensus repeats (SCRs) or complement control modules. CFHR2 is synthesized as a 270 amino acid precursor that contains an 18 amino acid signal peptide and a 252 amino acid mature chain with 4 Sushi (CCP/SCR) domains. CFHR2 is synthesized in the liver and secreted into plasma. It may be involved in complement regulation. CFHR2 can also be associated with lipoproteins and may play a role in lipid metabolism.

Recombinant Human CFHR2 Protein is produced by HEK293 cells expression system. The target protein is expressed with sequence (Glu19-Lys270) of human CFHR2 (Accession #NP\_001299601.1) fused with a 6×His tag at the C-terminus.

Store at -20°C. Store the lyophilized protein at -20°C to -80 °C up to 1 year from the date of receipt.  
After reconstitution, the protein solution is stable at -20°C for 3 months, at 2-8°C for up to 1 week.  
Avoid repeated freeze/thaw cycles.

## Validation Data

---



Recombinant Human CFHR2 Protein was determined by SDS-PAGE under reducing conditions with Coomassie Blue.