

Recombinant Human CFHR4 Protein

Catalog No.: RP02803 **Recombinant**

Sequence Information

Species	Gene ID	Swiss Prot
Human	10877	Q92496

Tags

C-His

Synonyms

Complement factor H-related protein 4;
FHR-4; CFHR4; CFHL4

Product Information

Source	Purification
HEK293 cells	> 95% as determined by reducing SDS-PAGE.

Endotoxin

<1EU/μg

Formulation

Lyophilized from a 0.22 μm filtered solution of PBS, pH 7.4.

Reconstitution

Centrifuge the tube before opening. Reconstitute to a concentration of 0.1-0.5 mg/mL in sterile distilled water. Avoid vortex or vigorously pipetting the protein. For long term storage, it is recommended to add a carrier protein or stabilizer (e.g. 0.1% BSA, 5% HSA, 10% FBS or 5% Trehalose), and aliquot the reconstituted protein solution to minimize free-thaw cycles.

Contact

☎ | 400-999-6126

✉ | cn.market@abclonal.com.cn

🌐 | www.abclonal.com.cn

Background

Complement factor H-related protein 4 is a protein that in humans is encoded by the CFHR4 gene. It is a secreted protein that belongs to the complement factor H protein family. Members of the H-related protein family are exclusively composed of individually folded protein domains. CFHR4 is synthesized as a 578 amino acid precursor that contains an 19 amino acid signal peptide and a 569 amino acid mature chain. Human CFHR4 is involved in complement regulation. It can associate with lipoproteins and may play a role in lipid metabolism.

Basic Information

Description

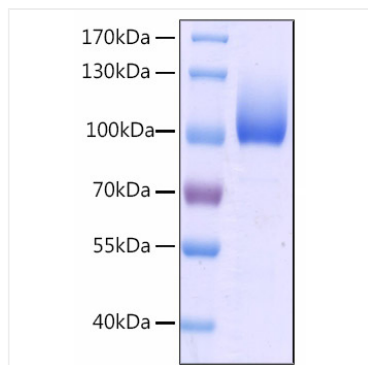
Recombinant Human CFHR4 Protein is produced by HEK293 cells expression system. The target protein is expressed with sequence (Glu20-Glu578) of human CFHR4 (Accession #NP_001188479.1) fused with a 6×His tag at the C-terminus.

Bio-Activity

Storage

Store the lyophilized protein at -20°C to -80°C for 12 months. After reconstitution, the protein solution is stable at -20°C for 3 months, at 2-8°C for up to 1 week. Avoid repeated freeze/thaw cycles.

Validation Data



RP02803 was determined by SDS-PAGE with Coomassie Blue, showing bands at 90-110 KDa..