

# Recombinant Mouse Osteopontin/SPP-1 Protein

Catalog No.: RP02806

Recombinant

1 Publications

## Sequence Information

Species	Gene ID	Swiss Prot
Mouse	20750	P10923

### Tags

C-His

### Synonyms

Spp1; Eta-1; Op; Spp-1;Osteopontin;  
2AR; Bone sialoprotein 1; Calcium  
oxalate crystal growth inhibitor protein;  
Early T-lymphocyte activation 1 protein;  
Minopontin; Secreted phosphoprotein 1;  
SPP-1

## Product Information

Source	Purification
HEK293 cells	> 95% as determined by HPLC

Calculated MW	Observed MW
31.59 kDa	45-60 kDa

### Endotoxin

&lt;1EU/μg

### Formulation

Lyophilized from a 0.22 μm filtered  
solution of PBS, pH 7.4.

### Reconstitution

Centrifuge the tube before opening.  
Reconstitute to a concentration of  
0.1-0.5 mg/mL in sterile distilled water.  
Avoid vortex or vigorously pipetting the  
protein. For long term storage, it is  
recommended to add a carrier protein or  
stabilizer (e.g. 0.1% BSA, 5% HSA, 10%  
FBS or 5% Trehalose), and aliquot the  
reconstituted protein solution to  
minimize free-thaw cycles.

## Background

Secreted phosphoprotein 1 (SPP1) expression in TAMs isolated from lung adenocarcinoma tissues and PMA-treated THP-1 cells were measured. Macrophage polarization was identified by flow cytometric analysis. Cell migration and apoptosis were assessed by Transwell migration assays and flow cytometric analysis, respectively. SPP1 is highly expressed in tumor tissues and TAMs isolated from patients with an advanced TNM stage, and also in PMA-treated THP-1 cells.

## Basic Information

### Description

Recombinant Mouse Osteopontin/SPP-1 Protein is produced by HEK293 cells expression system. The target protein is expressed with sequence (Leu17-Asn294) of mouse Osteopontin/SPP1 (Accession #NP\_033289.2) fused with a 6×His tag at the C-terminus.

### Bio-Activity

Measured by the ability of the immobilized protein to support the adhesion of B16 cells. When  $5 \times 10^4$  cells/well are added to a Recombinant Mouse (rm) Osteopontin/OPN coated plate, cell adhesion is enhanced in a dose-dependent manner after 1 hour

### Storage

Store at -20°C. Store the lyophilized protein at -20°C to -80 °C up to 1 year from the date of receipt.

After reconstitution, the protein solution is stable at -20°C for 3 months, at 2-8°C for up to 1 week.

Avoid repeated freeze/thaw cycles.

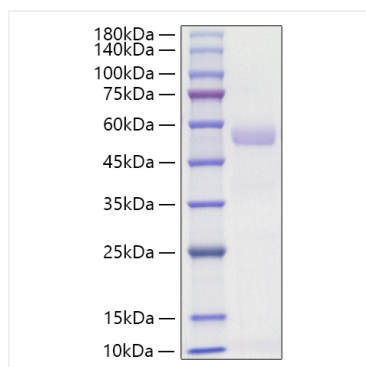
## Contact

☎ | 400-999-6126

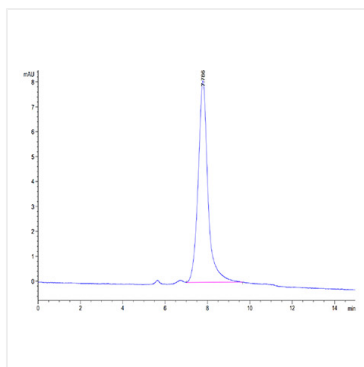
✉ | [cn.market@abclonal.com.cn](mailto:cn.market@abclonal.com.cn)

🌐 | [www.abclonal.com.cn](http://www.abclonal.com.cn)

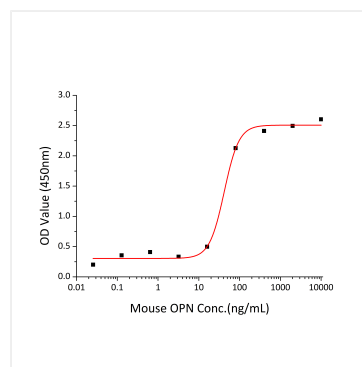
## Validation Data



Recombinant Mouse Osteopontin/SPP-1 Protein was determined by SDS-PAGE under reducing conditions with Coomassie Blue.



The purity of Mouse Osteopontin/SPP1 is greater than 95% as determined by SEC-HPLC.



immobilized protein to support the adhesion of B16 cells. When  $5 \times 10^4$  cells/well are added to a Recombinant Mouse (rm) Osteopontin/OPN coated plate, cell adhesion is enhanced in a dose-dependent manner after 1 hour incubation at 37 °C. The  $ED_{50}$  for this effect is 21.0-83.9 ng/mL.