

Recombinant Human Lymphotactin/XCL1 Protein

Catalog No.: RP02815 **Recombinant**

Sequence Information

| Species | Gene ID | Swiss Prot |
|---------|---------|------------|
| Human | 6375 | P47992 |

Tags
C-6*His**Synonyms**

XCL1; LTN; SCYC1; Lymphotactin; ATAC; C motif chemokine 1; Cytokine SCM-1; Lymphotaxin; SCM-1-alpha; Small-inducible cytokine C1; XC chemokine ligand 1

Product Information

| Source | Purification |
|--------------|----------------------------------|
| HEK293 cells | ≥ 90% as determined by SDS-PAGE. |

| Calculated MW | Observed MW |
|---------------|-------------|
| 11.11 kDa | 20-25 kDa |

Endotoxin

< 0.1 EU/μg of the protein by LAL method.

Formulation

Lyophilized from 0.22 μm filtered solution in PBS (pH 7.4). Normally 8% trehalose is added as protectant before lyophilization.

Reconstitution

Centrifuge the vial before opening. Reconstitute to a concentration of 0.1-0.5 mg/mL in sterile distilled water. Avoid vortex or vigorously pipetting the protein. For long term storage, it is recommended to add a carrier protein or stabilizer (e.g. 0.1% BSA, 5% HSA, 10% FBS or 5% Trehalose), and aliquot the reconstituted protein solution to minimize free-thaw cycles.

Contact

☎ | 400-999-6126

✉ | cn.market@abclonal.com.cn

Background

This antimicrobial gene encodes a member of the chemokine superfamily. Chemokines function in inflammatory and immunological responses, inducing leukocyte migration and activation. The encoded protein is a member of the C-chemokine subfamily, retaining only two of four cysteines conserved in other chemokines, and is thought to be specifically chemotactic for T cells. This gene and a closely related family member are located on the long arm of chromosome 1.

Basic Information

Description

Recombinant Human Lymphotactin/XCL1 Protein is produced by HEK293 cells expression system. The target protein is expressed with sequence (Val22-Gly114) of Human Lymphotactin/XCL1 (Accession #NP_002986.1) fused with a His tag at the C-terminus.

Bio-Activity**Shipping**

The product is shipped at ambient temperature. Upon receipt, store it immediately at the temperature recommended below.

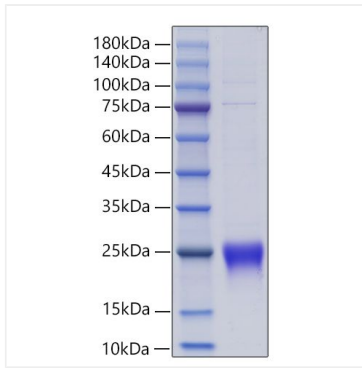
Storage

Store at -20°C. Store the lyophilized protein at -20°C to -80 °C up to 1 year from the date of receipt. After reconstitution, the protein solution is stable at -20°C for 3 months, at 2-8°C for up to 1 week. Avoid repeated freeze/thaw cycles.

Operational Notes

For your safety and health, please wear a lab coat and disposable gloves for handling.

Validation Data



Recombinant Human Lymphotoxin/XCL1 Protein was determined by SDS-PAGE under reducing conditions with Coomassie Blue.