

Recombinant Human TUBB4A Protein

Catalog No.: RP02833 **Recombinant**

Sequence Information

Species	Gene ID	Swiss Prot
Human	10382	P04350

Tags

N-His

Synonyms

Tubulin Beta-4A Chain; Tubulin 5 Beta;
Tubulin Beta-4 Chain; TUBB4A; TUBB4;
TUBB5

Product Information

Source	Purification
<i>E. coli</i>	> 90% as determined by reducing SDS-PAGE.

Calculated MW	Observed MW
51.7 kDa	58 kDa

Endotoxin

<1EU/μg

Formulation

Lyophilized from a 0.22 μm filtered solution of 20mM Tris-HCl, 50mM NaCl, 2M Urea, pH8.0.

Reconstitution

Centrifuge the tube before opening. Reconstitute to a concentration of 0.1-0.5 mg/mL in sterile distilled water. Avoid vortex or vigorously pipetting the protein. For long term storage, it is recommended to add a carrier protein or stabilizer (e.g. 0.1% BSA, 5% HSA, 10% FBS or 5% Trehalose), and aliquot the reconstituted protein solution to minimize free-thaw cycles.

Contact

 | 400-999-6126 | cn.market@abclonal.com.cn | www.abclonal.com.cn

Background

Tubulin Beta-4A Chain (TUBB4A) is a cytoplasmic peptide containing 444 amino acids. TUBB4A is a member of the Tubulin family. Tubulin is the major constituent of microtubules. Tubulin is a dimer composed of one alpha and one beta tubulin molecule; there are many forms of beta tubulins, Beta II and Beta IV Tubulin are ubiquitously expressed. It binds two moles of GTP, one at an exchangeable site on the beta chain and one at a non-exchangeable site on the alpha-chain.

Basic Information

Description

Recombinant Human TUBB4A Protein is produced by *E. coli* expression system. The target protein is expressed with sequence (Met1-Ala444) of human TUBB4A (Accession #NP_006078.2) fused with a 6×His tag at the N-terminus.

Bio-Activity

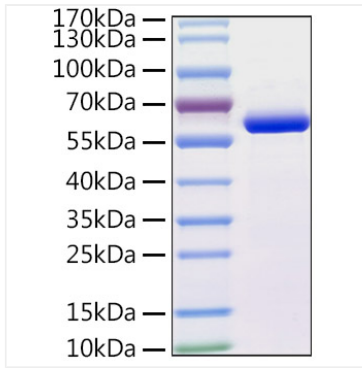
Storage

Store at -20°C. Store the lyophilized protein at -20°C to -80 °C up to 1 year from the date of receipt.

After reconstitution, the protein solution is stable at -20°C for 3 months, at 2-8°C for up to 1 week.

Avoid repeated freeze/thaw cycles.

Validation Data



Recombinant Human TUBB4A Protein was determined by SDS-PAGE with Coomassie Blue, showing bands at 58 KDa.